

DELHI TRANSCO LTD.

STATE LOAD DISPATCH CENTER

PROGRESS REPORT

JULY 2013

S. No.	CONTENTS	Page No.
1.	Salient Features of Delhi Power System	3
2.	Performance of Generating Stations within Delhi	4
3.	Details of Outage of Generating Stations within Delhi	5-13
4.	Allocation of Power to Delhi from unallocated quota of central sector	14
5.	Allocation of Power to Discoms	15
6.	Power Availability Demand Position of Delhi at the time of occurrence of Peak Demand	16
7.	Power Availability Demand Position of Delhi at the time of occurrence of Maximum Un-Restricted Demand	17
8.	Source wise scheduled drawl from grid and Availability within Delhi	18-20
9.	Shedding Details	21-24
10.	Load Curve for the Day of Peak Demand	25
11.	Load Curve for the day of occurrence of Maximum Un-Restricted Demand	26
12.	Load Curve for the day of Maximum Energy Consumed	27
13.	Load Curve for the day of Maximum Un-Restricted Energy Demand	28
14.	Load Duration Curve	29
15.	Frequency Analysis	30
16.	Voltage Profile for significant 220kV Sub-Stations	31
17.	Voltage Profile for significant 400kV Sub-Stations	32-33
18.	Details of Capacitors Installations in Delhi	34-39
19.	Tripping Details of 400/220 KV System in Delhi Power System	40-43
20.	Details of Under frequency Relay operations in Delhi Power System	44

SALIENT FEATURES OF DELHI POWER SYSTEM

Sr. No.	Features	JULY 2013	JULY 2012
1	Effective Generation Capacity within Delhi in MW		
	Rajghat Power House	135	135
	Gas Turbine	270	270
	Pragati Power Corporation Ltd.	330	330
	Badapur Thermal Power Station	705	705
	Rithala GT	108	108
	Bawana	685	685
	TOWMCL	16	--
	Total	2249	2233
2	Maximum Unrestricted Demand (MW)	5466	5727
	Date	02.07.2013	05.07.2012
	Time	15.01.31	15.10.14
3	Peak Demand met (MW)	5384	5642
	Date	04.07.2013	05.07.2012
	Time	15.13.52	15.10.14
4	Peak Availability (MW)	5319	5461
5	Shortage (-) / Surplus (+) in MW	(-)65	(-)181
6	Percentage Shortage (-) / Surplus (+)	(-) 1.21	(-) 3.21
7	Maximum Energy Consume in a day (Mus)	105.320	107.365
8	Energy Consumed during the month	2874.022	2888.449
9	Load Shedding in Mus		
A)	Due to Grid Restrictions		
i)	Under Frequency Relay Operations	0.028	0.247
ii)	Manual Load shedding from DTL S/Stns.	0.000	0.000
iii)	Load Shedding due to low frequency / Low Voltage / TTC/ATC Violation		
	NDPL	0.776	6.378
	BRPL	0.498	2.735
	BYPL	0.392	1.290
	NDMC	0.004	0.017
	MES	0.000	0.000
iv)	Due to transmission Constraints in Central Sector	0.275	36.840
	Total due to Grid Restriction	1.973	47.507
B)	Due to Constraints in System in Mus		
	DTL	4.404	2.425
	NDPL	0.475	0.976
	BRPL	1.735	2.946
	BYPL	0.376	1.332
	NDMC	0.000	0.003
	MES	0.000	0.003
	Other Agencies	0.955	0.023
	Total	7.962	7.705
11	Grand Total in Mus	9.935	55.212

2. PERFORMANCE OF GENERATING STATIONS WITHIN DELHI DURING JULY 2013

A) For the month of July 2013

All Figures in MUs

S. No	Stations	Gross Generation	Aux. Consumption	Net Generation	Availability (%)	Backing Down
1.	RPH	32.454	5.836	26.618	38.53	6.67475
2.	GT	88.401	3.051	85.350	87.08	82.73601
3.	PPCL	212.218	5.728	206.490	93.63	16.63520
4.	BTPS	357.007	33.127	323.880	96.84	134.43425
5.	Rithala	0.000	0.119	-0.119	89.17	61.008
6.	Bawana	62.219	2.727	59.492	98.35	357.7277
7.	Towmcl	11.964	1.805	10.159	--	--
	TOTAL	764.263	343.146	421.117	--	659.21591

B) For the Year 2013-14 (Upto July 2013)

Power Station	Effective Capacity (MW)	Net Generation in MUs for July 2013	Availability (%) for July 2013	PLF (%) for July 2013	Cumulative Generation in MUs upto July 2013 for the year 2013-14	Cumulative Availability in % upto July 2013 for the year 2013-14	Cumulative PLF in % upto July 2013 for the year 2013-14
RPH	135	26.618	38.53	31.04	195.873	59.50	56.69
GT	270	85.350	87.08	44.62	413.326	88.10	54.35
PPCL	330	206.490	93.63	86.69	781.427	88.78	83.176
BTPS	705	323.880	96.84	68.52	1453.108	96.81	78.42
Rithala	108	-0.119	89.17	0	-0.330	88.44	0.11
Bawana	685	59.492	98.35	11.87	326.656	80.72	17.28
Towmcl	16	10.159	--	--	26.665	--	--
TOTAL	2249	711.87	--	--	3196.725	--	--

3
(A)

**DETAILS OF OUTAGES OF GENERATING STNS. WITHIN DELHI W.E.F. APRIL 2012
RPH STATION**

Unit No	Capacity in MW	Outage		Synchronization		Reason of Outage
		Date	Time	Date	Time	
1	67.5	03.04.13	18.35	03.04.13	19.45	Unit tripped due to drum level very low.
		04.04.13	08.55	04.04.13	09.45	Unit tripped due to drum level low.
		14.04.13	10.20	14.04.13	15.40	Unit desynchronised to attend the CW line leakage.
		19.04.13	08.25	19.04.13	16.40	Unit desynchronised to attend the Boiler window repairing.
		19.04.13	17.00	19.04.13	17.30	Unit tripped due to bay no. 20 tripped.
		03.05.13	20.00	05.05.13	03.30	Unit desynchronised to attend the Boiler tube leakage.
		05.05.13	11.40	05.05.13	13.40	Unit tripped due to drum level low.
		05.05.13	15.55	05.05.13	20.15	Dark out due to Reactor on bay no. 9 had been blasted.
		19.05.13	07.10	24.05.13	04.40	Unit desynchronised due to shortage of coal fuel and to attend the CW line leakage.
		25.05.13	01.50	25.05.13	03.20	Unit tripped due to Furnace pr. very high.
		01.06.13	12.40	01.06.13	13.55	Unit tripped due to drum level low.
		02.06.13	11.55	02.06.13	13.05	Unit tripped due to Furnace pr. very high.
		06.06.13	17.10	06.06.13	20.05	Dark out due to 22K 9F, unit tripped.
		16.06.13	18.35	19.06.13	13.50	Unit desynchronised as per system operation.
		21.06.13	22.50	24.06.13	14.50	Unit desynchronised to attend the Boiler tube leakage.
		02.07.13	12.55	02.07.13	14.25	Dark out due to grid disturbance.
		09.07.13	23.30	10.07.13	00.25	Unit tripped due to flame failure.
		10.07.13	00.40	10.07.13	03.40	Unit tripped due to ST-1 trip.
		10.07.13	04.10	10.07.13	04.35	Unit tripped due to furnace pressure high.
		10.07.13	04.40	15.07.13	12.05	Unit tripped due to furnace pressure high (suspected boiler tube leakage).
16.07.13	11.00	22.07.13	00.05	Unit tripped due to furnace pressure very high.		
22.07.13	03.55	22.07.13	04.25			
22.07.13	10.45	22.07.13	12.00	Dark out due to 220kv supply failure.		
23.07.13	19.15	Contd.		Unit tripped on furnace pressure very high due to boiler tube leakage.		

Unit No	Capacity in MW	Outage		Synchronization		Reason of Outage
		Date	Time	Date	Time	
2	67.5	03.04.13	04.10	03.04.13	05.35	Unit tripped due to turbine trip.
		05.04.13	20.00	06.04.13	04.05	Unit desynchronised to attend the economiser tube leakage.
		14.04.13	10.10	14.04.13	18.15	Unit desynchronised to attend the CW line leakage.
		04.05.13	09.20	06.05.13	03.25	Unit desynchronised to attend the Economiser tube leakage.
		11.05.13	17.15	11.05.13	18.00	Unit tripped due to turbine trip.
		11.05.13	23.20	11.05.13	23.45	
		19.05.13	07.15	19.05.13	20.55	Unit desynchronised to attend the CW line leakage.
		24.05.13	05.50	01.06.13	00.25	Unit desynchronised due to shortage of coal fuel.
		01.06.13	19.20	07.06.13	14.20	Unit tripped due to Boiler tube leakage.
		11.06.13	07.15	11.06.13	08.30	Unit tripped due to birdage, bay No. 1 to 9 tripped.
		18.06.13	14.20	18.06.13	15.00	Unit tripped due to turbine trip.
		02.07.13	12.55	02.07.13	14.10	Dark out due to grid disturbance.
		02.07.13	23.55	03.07.13	00.55	Unit tripped due to loss of fuel.
		10.07.13	00.45	10.07.13	02.00	Unit tripped due to emergency board supply failure.
		10.07.13	10.45	10.07.13	11.55	Unit tripped due to furnace pressure very high.
		10.07.13	13.50	10.07.13	17.10	Unit desynchronised due to furnace pressure hunting.
		11.07.13	09.20	12.07.13	19.25	Unit desynchronised, furnace disturbance due to wet coal.
		14.07.13	15.35	14.07.13	16.10	Unit tripped due to furnace pressure very high.
		15.07.13	03.45	15.07.13	04.45	Unit tripped due to furnace pressure high.
		19.07.13	07.50	19.07.13	08.20	Unit tripped due to condensor vaccum low.
21.07.13	03.55	23.07.13	22.20	Unit desynchronised due to no coal flow.		
24.07.13	17.40	Contd.		Unit desynchronised to attend the leakage from ACW line.		

(B)

Gas Turbine

Unit No	Capacity in MW	Outage		Synchronization		Reason of Outage
		Date	Time	Date	Time	
1	30	01.04.13	0:00	01-04-13	5:45	Stopped due to low demand and high frequency
		03.04.13	16:30	10-04-13	11:25	
		18.04.13	23:20	19-04-13	12:01	Machine stopped to rectify the faulty Controller
		19.04.13	12:15	22-04-13	5:47	Stopped due to low demand and high frequency
		29.04.13	11:31	29-04-13	23:37	
		07.05.13	1:45	13-05-13	14:25	
		13.05.13	16:48	13-05-13	17:10	Machine came on FSNL during charging of 160 MVA Trf.
		18.05.13	13:25	21-05-13	21:10	Stopped due to low demand and high frequency
		30.05.13	21:45	17-06-13	22:55	
		17.06.13	23:15	18-06-13	20:15	
		28.06.13	10:52	28-06-13	22:00	
		28.06.13	22:00	29-06-13	17:00	Machine not available due to problem in Diesel Engine
		29.06.13	17:00	01-07-13	18:05	Stopped due to low demand and high frequency
		01.07.13	21:35	02-07-13	17:45	
		02.07.13	17:45	03-07-13	11:45	Machine could not be started due to problem in EOP
		03.07.13	11:45	08-07-13	8:55	Stopped due to low demand and high frequency
		12.07.13	11:50	15-07-13	8:00	
		15.07.13	9:10	15-07-13	10:40	
		17.07.13	11:20	18-07-13	20:35	
		20.07.13	12:05	27-07-13	21:30	
		27-07-13	21:40	28-07-13	0:12	Machine could not be synchronised due to ignition pressure high trip.
29-07-13	13:55	29-07-13	15:10	Machine tripped due to GCV reference not followed and loss of flame		
31-07-13	10:40	31-07-13	11:27	Machine came on FSNL due to grid disturbance		
31-07-13	17:30	31-07-13	23:59	Stopped due to low demand and high frequency		

Unit No	Capacity in MW	Outage		Synchronization		Reason of Outage
		Date	Time	Date	Time	
2	30	01-04-13	0:00	01-04-13	5:35	Stopped due to low demand and high frequency
		03-04-13	12:02	09-04-13	5:50	
		10-04-13	17:25	11-04-13	11:45	
		28-04-13	21:40	28-04-13	23:45	
		07-05-13	16:30	13-05-13	17:20	
		17-05-13	16:20	28-06-13	22:00	
		28-06-13	22:00	29-06-13	17:00	Machine not available due to problem in Gas Valve
		29-06-13	17:00	02-07-13	17:45	Stopped due to low demand and high frequency
		02-07-13	17:45	03-07-13	13:15	Machine could not be started due to problem in EOP
		03-07-13	13:15	31-07-13	23:59	Stopped due to low demand and high frequency

Unit No	Capacity in MW	Outage		Synchronization		Reason of Outage
		Date	Time	Date	Time	
3	30	01-04-13	0:00	01-04-13	7:30	Stopped due to low demand and high frequency
		17-04-13	10:40	22-04-13	8:10	
		28-04-13	21:46	29-04-13	10:55	
		04-05-13	0:05	06-05-13	14:00	
		07-05-13	1:50	07-05-13	12:00	
		11-05-13	19:30	14-05-13	17:15	
		14-05-13	18:23	14-05-13	21:00	
		14-05-13	21:00	17-05-13	15:45	
		06-06-13	17:04	06-06-13	19:00	Machine came on FSNL due to tripping of 160 MVA Tr-I & II at IP Extension end.
		06-06-13	22:47	07-06-13	11:55	Stopped due to low demand and high frequency
		09-06-13	8:09	09-06-13	9:50	Machine came on FSNL due to tripping of 160 MVA Tr-I & II Buchholtz relay operated after that tripped on Lube oil temperature high as the auxiliary supply failed .
		11-06-13	12:45	12-06-13	7:56	Stopped due to low demand and high frequency
		14-06-13	8:45	17-06-13	20:50	
		23-06-13	23:40	24-06-13	8:16	
		28-06-13	9:40	28-06-13	21:13	
		30-06-13	9:18	01-07-13	17:23	
		02-07-13	12:44	02-07-13	13:40	Machine came on FSNL due to grid disturbance
		12-07-13	14:25	12-07-13	21:30	Stopped due to low demand and high frequency
		11-07-13	11:30	18-07-13	20:40	
		20-07-13	12:06	20-07-13	13:22	
		22-07-13	10:32	22-07-13	10:46	Machine came on FSNL due to grid disturbance
22-07-13	11:20	22-07-13	12:55	Machine taken on FSNL due to voltage problem,160 MVA Tx. Not synchronised		
27-07-13	11:05	27-07-13	21:45	Stopped due to low demand and high frequency		
28-07-13	20:05	30-07-13	20:53			
31-07-13	10:40	31-07-13	15:55	Machine tripped due to grid disturbance		

Unit No	Capacity in MW	Outage		Synchronization		Reason of Outage
		Date	Time	Date	Time	
4	30	01-04-13	0:00	03-04-13	15:50	Stopped due to low demand and high frequency
		17-04-13	10:40	27-04-13	3:15	
		04-05-13	0:02	06-05-13	14:13	
		07-05-13	13:20	07-05-13	15:55	
		11-05-13	19:32	14-05-13	9:58	
		21-05-13	13:10	21-05-13	17:10	
		30-05-13	3:05	05-06-13	11:58	
		06-06-13	17:04	06-06-13	17:15	Machine came on FSNL due to tripping of 160 MVA Tr-I & II at IP Extension end.
		09-06-13	8:09	09-06-13	9:40	Machine came on FSNL due to tripping of 160 MVA Tr-I & II Buchholtz relay operated after that tripped on Lube oil temperature high as the auxiliary supply failed .
		11-06-13	12:45	12-06-13	7:54	Stopped due to low demand and high frequency
		14-06-13	10:20	17-06-13	23:59	
		18-06-13	0:00	19-06-13	21:45	machine not available due to non availability of 66 KV breaker.
		19-06-13	21:45	21-06-13	9:22	Machine not taken on bar due to less schedule from SLDC.
		24-06-13	14:46	24-06-13	15:30	Stopped due to low demand and high frequency
		28-06-13	9:30	28-06-13	22:00	
		28-06-13	22:00	29-06-13	12:10	machine not available due to non availability of AC AOP
		02-07-13	12:44	02-07-13	13:05	Machine came on FSNL due to grid disturbance
		17-07-13	11:30	18-07-13	23:27	Stopped due to low demand and high frequency
		22-07-13	10:32	22-07-13	11:02	Machine came on FSNL due to grid disturbance
		24-07-13	10:10	31-07-13	23:59	Stopped due to low demand and high frequency

Unit No	Capacity in MW	Outage		Synchronization		Reason of Outage
		Date	Time	Date	Time	
5	30	28-04-13	9:34	06-05-13	13:25	Stopped due to low demand and high frequency
		13-05-13	16:48	14-05-13	9:27	
		14-05-13	9:47	18-05-13	10:56	
		24-05-13	18:52	25-05-13	9:55	Tripped due to R-communication link failure alarm & master protective alarm appeared.
		06-06-13	17:04	06-06-13	17:48	Machine came on FSNI due to tripping of 160 MVA Tr-I & II at IP Extension end.
		09-06-13	8:09	09-06-13	8:54	Machine came on FSNL due to tripping of 160 MVA Tr-I & II Buchholtz relay operated after that tripped on Lube oil temperature high as the auxiliary supply failed .
		09-06-13	8:54	10-06-13	7:47	Machine not taken on load due to low schedule from SLDC
		17-06-13	12:17	17-06-13	14:00	Machine tripped on Bus under Voltage alarm as 66 KV bus became dead due to tripping of 160 MVA Tx-I & II .
		18-06-13	13:53	18-06-13	15:45	Machine tripped at IGV Control trouble and Fire Protection Alarm.
		02-07-13	12:44	02-07-13	13:08	Machine came on FSNL due to grid disturbance
		06-07-13	10:55	08-07-13	9:15	Stopped due to low demand and high frequency
		08-07-13	11:32	11-07-13	23:00	
		11-07-13	23:00	12-07-13	10:29	Machine could not be synchronised due to Overall diff. opearted problem
		12-07-13	20:42	15-07-13	8:55	Stopped due to low demand and high frequency
		16-07-13	8:29	16-07-13	9:55	Machine tripped on electrical trouble normal shut down (Due to MVR problem)
		17-07-13	3:00	17-07-13	5:00	
		20-07-13	13:33	23-07-13	21:15	Stopped due to low demand and high frequency
31-07-13	10:40	31-07-13	10:50	Machine came on FSNL due to grid disturbance		

Unit No	Capacity in MW	Outage		Synchronization		Reason of Outage
		Date	Time	Date	Time	
6	30	10-04-13	12:45	10-04-13	16:30	Stopped due to low demand and high frequency
		21-04-13	12:42	22-04-13	10:15	
		28-04-13	9:32	30-04-13	0:40	
		13-05-13	13:00	13-05-13	16:48	Tripped due to heavy jerk observed in control room.
		13-05-13	16:48	14-05-13	10:38	Stopped due to low demand and high frequency
		14-05-13	18:00	21-05-13	11:05	
		29-05-13	10:42	29-05-13	12:30	Oil temp gauge which is mounted on T/F was founded tilted by at least 30 which leads to maloperation of mercury switch and relay 26 TP-I & 26TP-II operated causing the machine tripped on Electrical trouable normal shutdown
		06-06-13	17:04	06-06-13	17:52	Machine came on FSNI due to tripping of 160 MVA Tr-I & II at IP Extension end.
		06-06-13	22:50	07-06-13	12:04	Stopped due to low demand and high frequency
		09-06-13	8:09	09-06-13	8:54	Machine came on FSNL due to tripping of 160 MVA Tr-I & II Buchholtz relay operated after that tripped on Lube oil temperature high as the auxiliary supply failed .
		09-06-13	8:54	10-06-13	7:52	Machine not taken on load due to low schedule from SLDC
		14-06-13	8:50	14-06-13	10:05	Stopped due to low demand and high frequency
		17-06-13	12:17	17-06-13	17:10	Machine tripped on Reverse Power relay operated as 66 KV bus become dead due to tripping of 160 MVA transformer I & II.
		30-06-13	9:07	01-07-13	17:25	Stopped due to low demand and high frequency
		02-07-13	12:44	02-07-13	13:10	Machine came on FSNL due to grid disturbance
		06-07-13	10:50	08-07-13	9:01	Stopped due to low demand and high frequency
		08-07-13	11:37	11-07-13	19:50	
		12-07-13	14:25	15-07-13	6:24	
		20-07-13	13:30	24-07-13	9:25	
31-07-13	10:40	31-07-13	11:36	Machine came on FSNL due to grid disturbance		

Unit No	Capacity in MW	Outage		Synchronization		Reason of Outage	
		Date	Time	Date	Time		
STG-1	30	01-04-13	0:00	01-04-13	9:15	Stopped due to low demand and high frequency	
		01-04-13	9:30	01-04-13	11:10	Machine stopped due to inspection of high Vibration	
		03-04-13	16:30	09-04-13	8:25	Stopped due to low demand and high frequency	
		29-04-13	11:31	30-04-13	2:05		
		07-05-13	16:30	13-05-13	19:15		
		18-05-13	13:25	22-05-13	0:10		
		30-05-13	21:45	18-06-13	23:54		
		28-06-13	10:52	28-06-13	22:00		
		28-06-13	22:00	29-06-13	17:00		Machine not available due to Non availability of GTs
		29-06-13	17:00	01-07-13	21:00		Stopped due to low demand and high frequency
		01-07-13	21:00	01-07-13	23:59	Machine not available due to problem in both BFPs.	
		02-07-13	0:00	02-07-13	17:45	Stopped due to low demand and high frequency	
		02-07-13	17:45	03-07-13	11:45	Macine not available due to non availability of GTs.	
		03-07-13	13:15	08-07-13	10:15	Stopped due to low demand and high frequency	
		12-07-13	11:50	15-07-13	13:00		
		17-07-13	11:25	18-07-13	23:15		
		20-07-13	12:10	27-07-13	21:30		
		27-07-13	21:30	28-07-13	0:12		
		28-07-13	0:12	28-07-13	1:55		
		29-07-13	13:55	29-07-13	16:00		Tripped due to tripping of GT#1
		31-07-13	10:40	31-07-13	13:55	Machine tripped due to grid disturbance	
31-07-13	17:30	31-07-13	23:59	Stopped due to low demand and high frequency			

Unit No	Capacity in MW	Outage		Synchronization		Reason of Outage
		Date	Time	Date	Time	
STG-2	30	01-04-13	0:00	01-04-13	11:25	Stopped due to low demand and high frequency
		16-04-13	10:40	22-04-13	11:45	
		23-04-13	12:14	23-04-13	13:09	Machine tripped due to malfunctioning of MS-14 Valve
		27-04-13	5:30	27-04-13	6:15	Machine tripped in the jerk.
		28-04-13	21:46	29-04-13	11:30	Stopped due to low demand and high frequency
		04-05-13	0:02	06-05-13	17:05	
		11-05-13	19:30	14-05-13	13:57	
		19-05-13	1:25	19-05-13	3:05	
		05-06-13	1:01	05-06-13	2:21	Tripped due to sudden drop in vaccum without appearing alarm in annunciation pannel.
		06-06-13	17:04	06-06-13	18:55	Machine tripped as the GT#3 & 4 came on FSNL due to tripping of 160 MVA Tx-I & II at IP Extn end.
		09-06-13	8:09	09-06-13	11:52	Machine tripped as corresponding GT came on FSNL due to tripping of 160 MVA Tr-I & II on Buchholtz relay operated .
		10-06-13	11:42	10-06-13	12:50	Machine stopped to attend
		11-06-13	12:45	12-06-13	10:35	Stopped due to low demand and high frequency
		14-06-13	8:45	17-06-13	23:45	
		23-06-13	21:35	23-06-13	23:20	
		28-06-13	9:40	28-06-13	23:15	Stopped due to low demand and high frequency
		02-07-13	12:44	02-07-13	14:25	Machine tripped due to grid disturbance.
		17-07-13	11:35	18-07-13	23:20	Stopped due to low demand and high frequency
		22-07-13	9:35	22-07-13	12:40	Machine tripped due to grid disturbance.
		27-07-13	11:07	27-07-13	23:15	Stopped due to low demand and high frequency
		28-07-13	20:07	31-07-13	3:00	
31-07-13	10:40	31-07-13	17:24	Machine tripped due to grid disturbance.		

Unit No	Capacity in MW	Outage		Synchronization		Reason of Outage
		Date	Time	Date	Time	
STG-3	30	05-04-13	17:05	05-04-13	18:20	Machine stopped manually to attend oil Leakage from Secondary oil Pressure line
		28-04-13	9:34	30-04-13	4:25	Stopped due to low demand and high frequency
		03-05-13	17:41	03-05-13	19:04	Machine stopped due to problem in drum level indication and level problem.
		13-05-13	13:00	13-05-13	16:48	Tripped due to heavy jerk observed in control room.
		13-05-13	16:48	14-05-13	13:50	Stopped due to low demand and high frequency
		14-05-13	18:00	18-05-13	13:05	Stopped due to low demand and high frequency
		03-06-13	9:22	03-06-13	10:07	Machine tripped on Hot well very high alarm as the Control valve CD-34 left the auto and closed. Another Stream CD-37 tried to be taken into service, in the mean time machine tripped on hot well high alarm.
		06-06-13	17:04	06-06-13	18:30	Machine tripped as the GT#5 & 6 came on FSNL due to tripping of 160 MVA Tx-I & II at IP Extn end.
		09-06-13	8:09	09-06-13	8:54	Machine tripped as corresponding GT came on FSNL due to tripping of 160 MVA Tr-I & II on Buchholtz relay operated .
		09-06-13	8:54	10-06-13	10:14	Machine not taken on load due to low schedule from SLDC
		15-06-13	1:58	15-06-13	2:58	Tripped due to LLVT tank level high.
		17-06-13	12:17	17-06-13	15:12	Machine tripped due to both GTs tripped due to Tripping of 160 MVA Tx.
		02-07-13	12:44	02-07-13	14:35	Machine tripped due to grid disturbance.
		06-07-13	10:55	08-07-13	10:15	Stopped due to low demand and high frequency
		08-07-13	10:15	11-07-13	23:07	Machine stopped to attend oil leakage from Oil catcher.
		12-07-13	20:42	15-07-13	8:40	Machine stopped as per SLDC message
		20-07-13	12:37	20-07-13	13:33	Machine tripped manually due to sticking of MS-14 valve and not opearting of MS-11 and MS-13 valve.
		20-07-13	13:33	24-07-13	2:05	Stopped due to low demand and high frequency
		31-07-13	10:40	31-07-13	12:27	Machine tripped due to grid disturbance.

(C) PRAGATI STATION

Unit No	Capacity in MW	Outage		Synchronization		Reason of Outage
		Date	Time	Date	Time	
1	104	23.05.13	14.29	23.05.13	14.56	Tripped due to Gas Fuel Pr. Low by GAIL
		15.06.13	21.55	17.06.13	9.00	No schedule to run GT#1 on Open Cycle.
		17.06.13	9.00	24.06.13	0.26	Tripped on internal fault
		25.06.13	22.00	26.06.13	2.00	
		26.06.13	2.00	26.06.13	13.42	No schedule of GT#1 in OC due to low demand, HRSG#1 not available- FW104 stuck
		09.07.13	19.03	09.07.13	19.50	Tripped on internal fault
		22.07.13	10.43	22.07.13	12.26	Tripped due to Grid Distrubance
		23.07.13	16.28	23.07.13	19.29	Tripped on internal fault

Unit No	Capacity in MW	Outage		Synchronization		Reason of Outage
		Date	Time	Date	Time	
2	104	21.04.13	8.15	21.04.13	18.15	Stopped by DTL to attend hot spot.
		21.04.13	18.15	23.04.13	6.31	Tripped on internal fault
		26.04.13	6.45	26.04.13	8.37	
		14.05.13	13.28	14.05.13	14.13	
		06.06.13	17.10	06.06.13	18.05	Tripped due to Grid Distrubance
		01.07.13	16.02	01.07.13	17.40	Tripped on internal fault
		02.07.13	12.54	02.07.13	13.55	Tripped due to Grid Distrubance
		08.07.13	11.37	08.07.13	12.48	Tripped on internal fault
		22.07.13	10.43	22.07.13	11.52	Tripped due to Grid Distrubance

Unit No	Capacity in MW	Outage		Synchronization		Reason of Outage
		Date	Time	Date	Time	
STG	122	17.04.13	18.37	17.04.13	19.52	Tripped on internal fault
		21.04.13	11.44	21.04.13	14.15	
		21.04.13	14.15	21.04.13	18.36	Shut down continued by DTL to attend hot spot.
		06.06.13	17.10	06.06.13	18.50	Tripped due to Grid Disturbance
		02.07.13	12.54	02.07.13	15.02	
		09.07.13	19.03	09.07.13	20.15	Tripped on internal fault
		22.07.13	10.43	22.07.13	15.53	Tripped due to Grid Disturbance
		23.07.13	16.28	23.07.13	17.42	Tripped on internal fault

(D) **BADARPUR THERMAL POWER STATION**

Unit	Capacity in MW	Outage		Synchronization		Reason of Outage
		Date	Time	Date	Time	
1	95	01.04.13	0:00	01.04.13	19:18	Reserve Shutdown
		12.05.13	18:18	12.05.13	21:20	Grid Disturbance
		04.06.13	22:45	05.06.13	23:45	Water Wall tube leakage
		13.06.13	10:58	13.06.13	11:32	Furnace Disturbance
		16.06.13	18:38	21.06.13	14:14	Reserve Shutdown
		09.07.13	20:41	15.07.13	0:00	
		19.07.13	3:28	20.07.13	18:14	
		26.07.13	14:36	29.07.13	16:00	

Unit	Capacity in MW	Outage		Synchronization		Reason of Outage
		Date	Time	Date	Time	
2	95	12.05.13	18:18	12.05.13	20:07	Grid Disturbance
		28.06.13	10:32	28.07.13	9:56	Reserve Shutdown

Unit	Capacity in MW	Outage		Synchronization		Reason of Outage
		Date	Time	Date	Time	
3	95	03.04.13	19:55	22.04.13	13:40	Planned Shutdown
		12.05.13	18:18	12.05.13	20:20	Grid Disturbance
		26.05.13	12:41	27.05.13	12:58	Economiser Tube leakage
		13.06.13	10:40	18.06.13	12:04	Reserve Shutdown
		04.07.13	5:45	04.07.13	7:06	Furnace Disturbance
		18.07.13	11:39	19.07.13	2:48	Reserve Shutdown

Unit	Capacity in MW	Outage		Synchronization		Reason of Outage
		Date	Time	Date	Time	
4	210	09.04.13	22:17	10.04.13	2:07	MDBFP relay malfunction
		12.05.13	18:18	12.05.13	21:35	Grid Disturbance
		25.05.13	7:28	23.05.13	15:34	UAT 4A diff relay casing shorted
		11.06.13	15:35	13.06.13	7:48	Reserve Shutdown

Unit	Capacity in MW	Outage		Synchronization		Reason of Outage
		Date	Time	Date	Time	
5	210	09.05.13	0:06	09.05.13	15:57	APH 5B NDE Bearing vibration high
		11.05.13	19:48	14.05.13	12:17	Reserve Shutdown
		16.06.13	15:58	16.06.13	17:09	CW Shortage
		24.06.13	16:23	24.06.13	17:45	Furnace Disturbance
		24.06.13	18:04	24.06.13	19:03	Furnace Disturbance
		27.06.13	14:20	27.06.13	18:31	AVR & Excitation System
		04.07.13	0:12	04.07.13	1:15	Furnace Disturbance
		27.07.13	19:16	30.07.13	1:24	Steam Cooled W/Wall leakage

(E) **BAWANA CCGT POWER STATION**

Unit	Capacity in MW	Outage		Synchronization		Reason of Outage
		Date	Time	Date	Time	
1	216	01.04.13	00:00	01.04.13	8:39	Combustion inspection
		05.04.13	10:55	21.04.13	--	M/C under planned shut down due to CW interconnection/CW sump cleaning/Diverter Damper setting
		19.06.13	00:26	19.06.13	02:42	G.T. -1 tripped due to Hot gas temp high.
		20.06.13	20:42	Contd.		Stopped due to low demand and high frequency

Unit	Capacity in MW	Outage		Synchronization		Reason of Outage
		Date	Time	Date	Time	
2	216	05.04.13	13:13	12.04.13	19.02	M/C under planned shut down due to CW interconnection/CW sump cleaning/Diverter Damper setting up to 12.04.13
		14.04.13	13:40	25.04.13	08.57	Stopped due to low demand and high frequency
		29.04.13	22:25	30.04.13	06:25	M/C Stopped due to gas leakage in pipe line
		07.05.13	20:38	08.05.13	0:26	CW Pump Motor Failure
		29.05.13	13:57	29.05.13	15:30	GT#2 tripped on EPB press by default
		03.06.13	10:54	03.06.13	13:53	GT #2 tripped due to its rotor earth fault
		06.06.13	22:50	10.06.13	12.38	Stopped due to low demand and high frequency
		13.06.13	08:14	20.06.13	18.33	Stopped due to low demand and high frequency
		21.06.13	08:21	21.06.13	12:54	GT #2 tripped due to difference in G-1 feedback
		30.06.13	14:16	30.06.13	14:58	GT#2 Tripped on Excitation tripping
		12.07.13	15:00	Contd.		Stopped due to low demand and high frequency

Unit	Capacity in MW	Outage		Synchronization		Reason of Outage
		Date	Time	Date	Time	
STG	254	01.04.13	0:00	27.04.13	19:19	M/C under planned shut down due to CW interconnection/CW sump cleaning/Diverter Damper setting up to 12.04.13 after force shutdown due to bearing failure of turbine up to 25.04.13 and 25.04.13 to 27.04.13 due to generator IR value low
		29.04.13	22:25	30.04.13	6:25	M/C Stopped due to gas leakage in pipe line
		30.04.13	22:07	30.04.13	23:37	GT#2 Diverted damper is closed
		07.05.13	20:35	08.05.13	3:12	CW Pump A Motor Failure
		08.05.13	11:57	08.05.13	13:19	CW Pump B Motor winding temperature increased up to threshold limit
		29.05.13	13:57	29.05.13	16:50	STG trip on GT trip
		03.06.13	10:54	03.06.13	15:57	STG trip on GT trip
		06.06.13	22:50	10.06.13	17:50	Stopped due to low demand and high frequency
		13.06.13	08:16	19.06.13	09:10	Stopped due to low demand and high frequency
		21.06.13	08:21	21.06.13	13:00	STG trip on GT trip
		27.06.13	18:01	27.06.13	18:42	GT#2 Diverted damper is closed
		29.06.13	17:31	29.06.13	18:29	CW Pump B Discharge valve closed
		30.06.13	14:16	30.06.13	15:34	STG trip on GT trip
12.07.13	15:00	Contd.		Stopped due to low demand and high frequency		

(E) RITHALA POWER STATION

Unit	Capacity in MW	Outage		Synchronization		Reason of Outage
		Date	Time	Date	Time	
1	31.8	19.03.13	17:32	Contd.		No schedule have been given by SLDC on Spot gas

Unit	Capacity in MW	Outage		Synchronization		Reason of Outage
		Date	Time	Date	Time	
2	31.8	05.03.13	15:38	07.06.13	12:05	No schedule have been given by SLDC on Spot gas Gas turbine taken on spot)
		07.06.13	22:41	Contd.		No schedule have been given by SLDC on Spot gas

Unit	Capacity in MW	Outage		Synchronization		Reason of Outage
		Date	Time	Date	Time	
STG	31.8	27.02.13	00:01	07.06.13	17:40	No schedule have been given by SLDC on Spot gas
		07.06.13	22:38	Contd.		No schedule have been given by SLDC on Spot gas

4

ALLOCATION OF POWER TO DELHI

A)

Allocation of power to Delhi from Unallocated quota of Central Sector Generating Stations to Delhi w.e.f. 19.01.2013

Time block 00.00hrs. to 24.00hrs. @ 0% allocation from Unallocated Quota

Name of the Stn	Installed capacity	Total Un-allocated	Basic Allocation	Basic Allocation at periphery	Allocation out of Unallocated Quota	Allocation out of Un-allocated Quota at Delhi periphery	Total allocation at Delhi periphery
1	2	3	4	5	6	7	(8)=(5)+(7)
NTPC STATIONS							
Singrauli STPS	2000	300	150	130	0	0	130
Rihand-I	1000	150	100	87	0	0	87
Rihand Stage -II	1000	150	126	109	0	0	109
Rihand Stage -III	500	75	66	57	0	0	57
ANTA GPS	419	63	44	41	0	0	41
Auriya GPS	663.36	99	72	67	0	0	67
Dadri GPS	829.78	129	91	85	0	0	85
Dadri NCTPS (Th)	840	0	756	657	0	0	657
Dadri NCTPS (Th) Stage-II	980	147	735	639	0	0	639
Unchahaar-I TPS	420	20	24	21	0	0	21
Unchahaar-II TPS	420	63	47	41	0	0	41
Unchahaar-III TPS	210	31	29	25	0	0	25
TOTAL	9282	1227	2240	1959	0	0	1959
NHPC							
Baira Suil HPS	180	0	20	19	0	0	19
Salal HPS	690	0	80	76	0	0	76
Tanakpur HEP	94	0	12	11	0	0	11
Chamera HEP	540	0	43	41	0	0	41
Chamera-II HEP	300	54	40	38	0	0	38
Chamera-III HEP	231	35	29	28	0	0	28
URI HEP	480	0	53	50	0	0	50
Sewa HEP	120	18	16	15	0	0	15
Dhaulti Ganga HEP	280	42	37	35	0	0	35
Dulhasti HEP	390	58	50	48	0	0	48
TOTAL	3305	206	380	361	0	0	361
NPC							
Narora APS	440	64	47	41	0	0	41
RAPP(B)	440	66	0	0	0	0	0
RAPP (C)	440	64	56	49	0	0	49
TOTAL	1320	194	103	89	0	0	89
SVJNL							
Nathpa Jhakri HEP	1500	149	142	123	0	0	123
THDC							
Tehri Hydro	1000	99	103	89	0	0	89
Koteshwar HEP	400	40	39	37	0	0	37
TOTAL	1400	139	142	127	0	0	127
Total	16807	1915	3007	2660	0	0	2660
Allocation from ER and Tala HEP							
Farakka	1600	0	22	19	0	0	19
Kahalgaon	840	0	51	43	0	0	43
Talchar	1000	0	0	0	0	0	0
Tala HEP	1020	153	30	25	0	0	25
Mejia TPS Unit-6	250	0	29	25	0	0	25
Kahalgaon-II	1500	0	157	131	0	0	131
Total ER	6210	153	290	242	0	0	242
Joint Venture							
Jhajjar TPS	1000	76	231	201	0	0	201
Grand Total	24017	2144	3528	3102	0	0	3102

5 ALLOCATION OF POWER TO DISCOMS

ALLOCATION OF POWER TO VARIOUS LICENCEES AS PER ORDER OF DERC AND DECISION OF GNCTD FOR ALLOCATION OF CENTRAL SECTOR STATIONS (DADRI THERMAL & BTPS) AND STATE SECTOR GENERATING STATIONS w.e.f. 01.04.2011.

(Allocation In %)

(A) 10.00hrs. to 17.00hrs.

SOURCES	LICENSEES					
	NDMC	MES	NDPL	BRPL	BYPL	TOTAL
1. Central Sector without Dadri (Th)	0.00	0.00	29.18	43.58	27.24	100.00
2. Dadri (Th)	14.98	0.00	24.18	36.87	23.97	100.00
3. BTPS	15.94	7.09	21.88	33.37	21.72	100.00
4. RPH	0.85	0.00	28.39	42.97	27.79	100.00
5. GT	0.93	0.00	28.28	42.99	27.80	100.00
6. Pragati	26.69	0.00	20.77	31.76	20.7	100.00
7. DVC	0.00	0.00	29.18	43.58	27.24	100.00

(B) 00.00hrs. to 10.00hrs. and 17.00hrs. to 24.00hrs.

SOURCES	LICENSEES					
	NDMC	MES	NDPL	BRPL	BYPL	TOTAL
1. Central Sector without Dadri (Th)	0.00	0.00	29.18	43.58	27.24	100.00
2. Dadri (Th)	14.05	0.00	24.18	36.87	24.90	100.00
3. BTPS	15.07	7.09	21.88	33.37	22.59	100.00
4. RPH	0.00	0.00	28.390	42.97	28.64	100.00
5. GT	0.00	0.00	28.28	42.99	28.73	100.00
6. Pragati	25.76	0.00	20.77	31.76	21.71	100.00
7. DVC	0.00	0.00	29.18	43.58	27.24	100.00

6 POWER AVAILABILITY-DEMAND POSITION AT THE TIME OF PEAK DEMAND MET DURING JULY 2013

All figures in MW

Date	Time of peak demand	Generation within Delhi								Import from the Grid	Schedule from the Grid	OD(-)/UD(+)	Demand met	Shedding	Un-Restricted Demand
		RPH	GT	PPCL	Rithala	Bawana	Towmcl	BTPS	Total						
(1)	(2)	(3)	(4)	(5)	(6)	(7)	(8)	(9)= (3) to (8)	(10)	(11)	(12)= (11) - (10)	(13)= (11)+ (12)	(14)	(15)= (13)+ (14)	
1	15.36.55	83	71	264	0	206	14	446	1084	4136	3953	183	5220	61	5281
2	15.01.31	84	151	180	0	205	13	495	1128	4232	3928	304	5360	106	5466
3	15.33.43	71	153	261	0	206	14	436	1141	4023	4062	-39	5164	3	5167
4	15.13.52	85	152	287	0	204	15	466	1209	4175	4240	-65	5384	14	5398
5	15.17.56	75	156	261	0	199	12	461	1164	4050	4209	-159	5214	0	5214
6	00.00.12	85	156	294	0	196	11	471	1213	3598	3661	-63	4811	0	4811
7	00.00.22	84	78	262	0	205	14	440	1083	3598	3794	-196	4681	0	4681
8	14.47.13	91	107	284	0	290	0	499	1271	3744	3780	-36	5015	0	5015
9	17.04.20	83	107	287	0	256	10	448	1191	3630	3311	319	4821	0	4821
10	14.27.10	0	103	267	0	225	11	346	952	3593	3661	-68	4545	0	4545
11	15.27.14	0	107	288	0	252	15	377	1039	3778	3809	-31	4817	81	4898
12	16.35.58	0	72	262	0	-2	16	386	734	3923	3886	37	4657	3	4660
13	23.37.14	33	74	294	0	-8	15	406	814	3809	3780	29	4623	22	4645
14	23.15.08	35	76	298	0	-4	12	364	781	3651	3586	65	4432	2	4434
15	15.31.23	72	184	288	0	-4	13	416	969	4029	3924	105	4998	15	5013
16	22.51.26	39	187	294	0	-4	15	454	985	3826	4011	-185	4811	2	4813
17	10:33:36	38	81	291	0	-1	15	448	872	4167	3939	228	5039	0	5039
18	15.19.18	39	81	290	0	-3	15	402	824	4272	4140	132	5096	16	5112
19	15.22.02	41	187	263	0	-3	15	358	861	4204	4180	24	5065	18	5083
20	00.02.09	40	194	298	0	-2	15	412	957	3663	3618	45	4620	0	4620
21	22.51.51	0	72	296	0	-3	13	438	816	3453	3651	-198	4269	3	4272
22	15.27.24	42	69	185	0	-3	11	432	736	3660	3652	8	4396	1	4397
23	22.49.23	42	99	292	0	-3	10	500	940	3809	3871	-62	4749	0	4749
24	15.04.06	29	113	289	0	-3	14	427	869	4098	4036	62	4967	28	4995
25	11.52.17	0	117	295	0	-3	13	440	862	3735	3659	76	4597	0	4597
26	15.17.11	0	116	265	0	-3	16	376	770	3889	4097	-208	4659	2	4661
27	23.28.18	0	119	296	0	-3	16	210	638	3781	3648	133	4419	0	4419
28	22.00.00	0	113	295	0	-3	17	316	738	3936	3800	136	4674	24	4698
29	15.16.22	0	103	290	0	-3	13	307	710	4294	4132	162	5004	14	5018
30	15.25.17	0	110	290	0	-3	14	502	913	3980	3949	31	4893	3	4896
31	15.15.13	0	114	295	0	-3	16	504	926	3638	3914	-276	4564	0	4564

7 POWER AVAILABILITY- DEMAND POSITION AT THE TIME OF MAXIMUM UNRESTRICTED DEMAND DURING JULY 2013

Date	Time of peak demand	Generation within Delhi								Import from the Grid	Schedule from the Grid	OD(-)/UD(+)	Demand met	Shedding	Un-Restricted Demand
		RPH	GT	PPCL	Rithala	Bawana	Towmcl	BTPS	Total						
(1)	(2)	(3)	(4)	(5)	(6)	(7)	(8)	(9)= (3) to (8)	(10)	(11)	(12)= (11) - (10)	(13)= (11)+ (12)	(14)	(15)= (13)+ (14)	
1	15.36.55	83	71	264	0	206	14	446	1084	4136	3953	183	5220	61	5281
2	15.01.31	84	151	180	0	205	13	495	1128	4232	3928	304	5360	106	5466
3	15.33.43	71	153	261	0	206	14	436	1141	4023	4062	-39	5164	3	5167
4	15.13.52	85	152	287	0	204	15	466	1209	4175	4240	-65	5384	14	5398
5	15.17.56	75	156	261	0	199	12	461	1164	4050	4209	-159	5214	0	5214
6	00.00.12	85	156	294	0	196	11	471	1213	3598	3661	-63	4811	0	4811
7	00.00.22	84	78	262	0	205	14	440	1083	3598	3794	-196	4681	0	4681
8	14.47.13	91	107	284	0	290	0	499	1271	3744	3780	-36	5015	0	5015
9	17.04.20	83	107	287	0	256	10	448	1191	3630	3311	319	4821	0	4821
10	14.27.10	0	103	267	0	225	11	346	952	3593	3661	-68	4545	0	4545
11	15.27.14	0	107	288	0	252	15	377	1039	3778	3809	-31	4817	81	4898
12	16.35.58	0	72	262	0	-2	16	386	734	3923	3886	37	4657	3	4660
13	23.37.14	33	74	294	0	-8	15	406	814	3809	3780	29	4623	22	4645
14	23.15.08	35	76	298	0	-4	12	364	781	3651	3586	65	4432	2	4434
15	15.31.23	72	184	288	0	-4	13	416	969	4029	3924	105	4998	15	5013
16	22.51.26	39	187	294	0	-4	15	454	985	3826	4011	-185	4811	2	4813
17	10:33:36	38	81	291	0	-1	15	448	872	4167	3939	228	5039	0	5039
18	15.19.18	39	81	290	0	-3	15	402	824	4272	4140	132	5096	16	5112
19	15.22.02	41	187	263	0	-3	15	358	861	4204	4180	24	5065	18	5083
20	00.02.09	40	194	298	0	-2	15	412	957	3663	3618	45	4620	0	4620
21	22.51.51	0	72	296	0	-3	13	438	816	3453	3651	-198	4269	3	4272
22	15.27.24	42	69	185	0	-3	11	432	736	3660	3652	8	4396	1	4397
23	22.49.23	42	99	292	0	-3	10	500	940	3809	3871	-62	4749	0	4749
24	15.04.06	29	113	289	0	-3	14	427	869	4098	4036	62	4967	28	4995
25	11.52.17	0	117	295	0	-3	13	440	862	3735	3659	76	4597	0	4597
26	15.17.11	0	116	265	0	-3	16	376	770	3889	4097	-208	4659	2	4661
27	23.28.18	0	119	296	0	-3	16	210	638	3781	3648	133	4419	0	4419
28	23.00.00	0	113	295	0	-3	16	319	740	3841	3910	-69	4581	195	4776
29	15.16.22	0	103	290	0	-3	13	307	710	4294	4132	162	5004	14	5018
30	15.25.17	0	110	290	0	-3	14	502	913	3980	3949	31	4893	3	4896
31	15.15.13	0	114	295	0	-3	16	504	926	3638	3914	-276	4564	0	4564

SOURCEWISE SCHEDULED DRAWL FROM NORTHERN GRID AS WELL AS AVAILABILITY WITHIN DELHI FOR JULY 2013

A) AVAILABILITY FROM GENCO AND PRAGATI STNs. (all fig in MUs)

A (i) RPH	32.454
(ii) GT+STG	88.401
(iii) PRAGATI	212.218
(iv) RITHALA	0.000
(v) BAWANA CCGT	62.219
(vi) Timarpur - Okhla	11.964
TOTAL	407.256
B) AVAILABILITY FROM BTPS	323.882
C) AUXILIARY CONSUMPTION OF GENERATING STNs. EXCLUDING BTPS	19.266
D) NET GENERATION AVAILABLE WITHIN DELHI(A+B-C)	711.872

B) SOURCE WISE SCHEDULED DRAWL FROM THE NORTHERN GRID

NAME OF THE STATION	AVAILABILITY AT POWER PLANT	AVAILABILITY AT DELHI PERIPHERY	ALLOCATION MADE BY NRLDC AT POWER PLANT	ALLOCATION MADE BY NRLDC AT DELHI PERIPHERY
B/SUIL	6.833	6.653	6.833	6.653
SALAL	54.264	52.832	54.264	52.832
SASAN	0.000	0.000	0.000	0.000
TANKAPUR	6.207	6.045	6.207	6.045
CHAMERA	29.175	28.405	29.175	28.405
CHAMERA -II	29.519	28.742	29.519	28.742
CHAMERA -III	21.444	20.879	21.444	20.879
DHAULIGANGA	0.000	0.000	0.000	0.000
SEWA -2	4.454	4.338	4.334	4.221
URI	31.088	30.262	31.088	30.262
KOTESHWAR	24.080	23.445	24.080	23.445
MUNDRA_UMPP	0.000	0.000	0.000	0.000
ANTA (GAS)	23.984	23.353	22.652	22.057
ANTA (RLNG)	6.110	5.948	0.000	0.000
ANTA (LIQUID)	0.000	0.000	0.000	0.000
DADRI (GAS)	35.362	34.435	33.239	32.370
DADRI (RLNG)	28.932	28.165	0.485	0.473
DADRI (LIQUID)	0.000	0.000	0.000	0.000
AURAIYA (GAS)	23.020	22.411	20.327	19.792
AURAIYA (RLNG)	23.871	23.241	0.000	0.000
AURAIYA (LIQUID)	0.000	0.000	0.000	0.000
SINGRAULI	99.905	97.268	95.065	92.555
RIHAND -I	54.483	53.061	49.567	48.273
RIHAND -II	83.776	81.561	74.260	72.295
RIHAND -III	46.020	44.808	43.083	41.948
UNCHAHAHAR-I	16.861	16.416	13.858	13.493
UNCHAHAHAR-II	33.432	32.551	28.474	27.724
UNCHAHAHAR-III	20.569	20.027	17.590	17.126
DADRI (TH)	542.376	528.082	446.518	434.761
DADRI (TH) STAGE-II	525.510	511.664	472.342	459.907
NAPP	14.514	14.130	14.514	14.130
RAPP 'B'	0.000	0.000	0.000	0.000
RAPP 'C'	23.007	22.398	23.007	22.398
NATHPA JHAKRI	107.119	104.299	107.119	104.299
DULASTI	36.101	35.149	36.101	35.149
TEHRI	67.102	65.338	67.102	65.338
JHAJJAR	125.348	122.047	21.411	20.844
KHELGAON	25.648	24.973	23.235	22.624
KHELGAON-II	110.221	107.316	106.689	103.878
FARAKA	13.853	13.489	12.847	12.510
TALA	23.006	22.399	23.006	22.399
TALCHER	0.000	0.000	0.000	0.000
DVC	230.093	227.421	227.421	221.427
WEST BENGAL	99.129	98.276	98.276	95.679

NAME OF THE STATION	AVAILABILITY AT POWER PLANT	AVAILABILITY AT DELHI PERIPHERY	ALLOCATION MADE BY NRLDC AT POWER PLANT	ALLOCATION MADE BY NRLDC AT DELHI PERIPHERY
GUJRAT	0.308	0.304	0.304	0.296
ASSAM	32.522	32.106	32.106	31.259
METHON POWER(NDPL)LT-06	106.467	105.232	105.232	102.448
DVC MEJIA (LT-08)(BYPL)	75.452	74.577	74.577	72.608
RAJASTHAN	131.485	130.034	130.034	126.600
HIMACHAL PRADESH	92.561	91.540	91.540	89.121
TRIPURA	14.576	14.434	14.434	14.052
MADHYA PRADESH(WR)	107.514	105.970	105.970	103.146
JAMMU & KASHMIR	89.854	88.862	88.862	86.512
DVC (FOR NDPL) LT-09	8.294	8.197	8.197	7.981
HARYANA (LT-05)	5.969	5.900	5.900	5.739
ORISSA	107.019	105.492	105.492	102.751
TO HARYANA	-31.692	-32.044	-32.044	-32.912
TO ORISSA	-0.291	-0.295	-0.295	-0.304
TO UTTAR PRADESH	-25.028	-25.382	-25.382	-26.068
TO GUJRAT	-5.177	-5.273	-5.273	-5.423
TO KERALA	-4.225	-4.297	-4.297	-4.413
TO ANDHRA	-0.129	-0.131	-0.131	-0.134
TO MADHYA PRADESH	-0.152	-0.154	-0.154	-0.158
TO MAHARASHTRA	-9.480	-9.678	-9.678	-9.944
TO SIKKIM	-0.360	-0.364	-0.364	-0.374
TO POWER EXCHANGE (IEX)	-381.925	-392.311	-381.925	-392.311
POWRER EXCHANGE(PX)	0.000	0.000	0.000	0.000
TO POWER EXCHANGE (PX)	-35.537	-36.487	-35.537	-36.487
TO SHARE PROJECT (HARYANA)	-2.891	-2.972	-2.891	-2.972
TO SHARE PROJECT (PUNJAB)	-3.914	-4.024	-3.914	-4.024
TOTAL	2917.633	2831.060	2545.893	2451.921

C) AGENCY WISE BREAKUP OF ENERGY SCHEDULED DRAWL FROM THE GRID

NAME OF THE STATION	AVAILABILITY AT POWER PLANT	AVAILABILITY AT DELHI PERIPHERY	ALLOCATION MADE BY NRLDC AT POWER PLANT	ALLOCATION MADE BY NRLDC AT DELHI PERIPHERY
NTPC - NR	1564.209	1522.990	1317.461	1282.774
NTPC - ER	149.722	145.778	142.771	139.012
NHPC	219.084	213.304	218.964	213.187
NPC	37.521	36.529	37.521	36.529
KOTESHWAR	24.080	23.445	24.080	23.445
MUNDRA_UMPP	0.000	0.000	0.000	0.000
NATHPA JHAKRI	107.119	104.299	107.119	104.299
TEHRI	67.102	65.338	67.102	65.338
TALA	23.006	22.399	23.006	22.399
JHAJJAR	125.348	122.047	21.411	20.844
TALCHER	0.000	0.000	0.000	0.000
DVC	230.093	227.421	227.421	221.427
WEST BENGAL	99.129	98.276	98.276	95.679
GUJRAT	0.308	0.304	0.304	0.296
ASSAM	32.522	32.106	32.106	31.259
DVC CTPS (BRPL)	0.000	0.000	0.000	0.000
DVC CTPS (BYPL)	0.000	0.000	0.000	0.000
DVC CTPS (NDPL)	0.000	0.000	0.000	0.000
METHON POWER (NDPL)-LT-06	106.467	105.232	105.232	102.448
DVC MEJIA (LT-08)(BYPL)	75.452	74.577	74.577	72.608
URS	0.000	0.000	0.000	0.000
RAJASTHAN	131.485	130.034	130.034	126.600
HIMACHAL PRADESH	92.561	91.540	91.540	89.121
TRIPURA	14.576	14.434	14.434	14.052
MADHYA PRADESH(WR)	107.514	105.970	105.970	103.146
JAMMU & KASHMIR	89.854	88.862	88.862	86.512
DVC (FOR NDPL) LT-09	8.294	8.197	8.197	7.981
HARYANA (LT -05)	5.969	5.900	5.900	5.739
UTTAR PRADESH	0.000	0.000	0.000	0.000
ORISSA	107.019	105.492	105.492	102.751
POWER EXCHANGE(IEX)	0.000	0.000	0.000	0.000
POWER EXCHANGE(PX)	0.000	0.000	0.000	0.000
TOTAL	3418.432	3344.473	3047.778	2967.446

D) AGENCY WISE BREAKUP OF ENERGY SCHEDULED BY NRLDC FOR EXPORT TO OTHER UTILITIES FROM DTL

NAME OF THE STATION	AVAILABILITY AT POWER PLANT	AVAILABILITY AT PERIPHERY	ALLOCATION MADE BY NRLDC AT POWER PLANT	ALLOCATION MADE BY NRLDC AT POWER PERIPHERY
TO HARYANA	-31.692	-32.044	-32.044	-32.912
TO ORISSA	-0.291	-0.295	-0.295	-0.304
TO UTTAR PRADESH	-25.028	-25.382	-25.382	-26.068
TO GUJRAT	-5.177	-5.273	-5.273	-5.423
TO ANDHRA	-0.129	-0.131	-0.131	-0.134
TO KERALA	-4.225	-4.297	-4.297	-4.413
TO MADHYA PRADESH	-0.152	-0.154	-0.154	-0.158
TO MAHARASHTRA	-9.480	-9.678	-9.678	-9.944
TO RAJASTHAN	0.000	0.000	0.000	0.000
TO ASSAM	0.000	0.000	0.000	0.000
TO SIKKIM	-0.360	-0.364	-0.364	-0.374
TO HIMACHAL PRADESH	0.000	0.000	0.000	0.000
TO WEST BENGAL	0.000	0.000	0.000	0.000
TO POWER EXCHANGE (IEX)	-381.925	-392.311	-381.925	-392.311
TO POWER EXCHANGE (PX)	-35.537	-36.487	-35.537	-36.487
TO SHARE PROJECT (HARYANA)	-2.891	-2.972	-2.891	-2.972
TO SHARE PROJECT (PUNJAB)	-3.914	-4.024	-3.914	-4.024
TOTAL	-500.799	-513.413	-501.884	-515.525
TOTAL SCHEDULED DRAWAL FROM THE GRID	2917.633	2831.060	2545.893	2451.921
TOTAL CONSUMPTION INCLUDING AUX. OF GENERATING STNs. EXCLUDING BTPS				2893.288
NET CONSUMPTION				2874.022
AVAILABILITY WITHIN DELHI				711.872
ACTUAL DRAWAL FROM THE GRID				2162.150
OVER DRAWAL(+)/UNDER DRAWAL(-) FROM THE GRID ON THE BASIS OF SCHEDULED ALLOCATION MADE BY NRLDC TO DELHI AT PERIPHERY				-289.771
LOAD SHEDDING				9.935
UNRESTRICTED DEMAND (GROSS)				2903.223
UNRESTRICTED DEMAND (NET)				2883.957
MAX. NET CONSUMPTION				105.320 ON 03.07.2013
MAX. LOAD SHEDDING				610MW ON 02.07.2013 AT 13.00HRS.
PEAK LOAD	Peak Demand during the month			SHEDDING AT PEAK TIME
DAY PEAK	5384MW AT 15.13.52HRS ON 04.07.2013			14 MW
EVENING PEAK	5070MW AT 23.00.00HRS ON 01.07.2013			157 MW
P.L.F. OF GENCO, PRAGATI STNs. AND OTHERS	RPH			32.31%
	GT			44.01%
	PRAGATI			86.44%
	RITHALA			0.00%
	BAWANA			12.23%
	Timarpur Okhla			100.50%

SHEDDING DETAILS DURING THE MONTH OF JULY 2013.

ALL FIGURES IN MUs

DATE	No. of Under Freq. Relay Operated	Shedding due to under frequency relay operation in MUs					Shedding due to Grid Restrictions (Over drawl / low freq.)			
		BSES		NDPL	NDMC	TOTAL	BSES		NDPL	NDMC
		BYPL	BRPL				BYPL	BRPL		
1	2	3	4	5	6	7=3 to 6	8	9	10	11
01-Jul-13	1	0.004	0.000	0.000	0.000	0.004	0.000	0.000	0.000	0.000
02-Jul-13	1	0.000	0.000	0.001	0.000	0.001	0.000	0.044	0.145	0.000
03-Jul-13	0	0.000	0.000	0.000	0.000	0.000	0.000	0.000	0.000	0.000
04-Jul-13	0	0.000	0.000	0.000	0.000	0.000	0.000	0.000	0.000	0.000
05-Jul-13	8	0.001	0.000	0.017	0.000	0.018	0.000	0.056	0.049	0.000
06-Jul-13	0	0.000	0.000	0.000	0.000	0.000	0.000	0.000	0.000	0.000
07-Jul-13	0	0.000	0.000	0.000	0.000	0.000	0.000	0.000	0.000	0.000
08-Jul-13	0	0.000	0.000	0.000	0.000	0.000	0.000	0.000	0.000	0.000
09-Jul-13	0	0.000	0.000	0.000	0.000	0.000	0.000	0.000	0.000	0.000
10-Jul-13	0	0.000	0.000	0.000	0.000	0.000	0.000	0.000	0.000	0.000
11-Jul-13	0	0.000	0.000	0.000	0.000	0.000	0.000	0.000	0.000	0.000
12-Jul-13	0	0.000	0.000	0.000	0.000	0.000	0.000	0.002	0.034	0.000
13-Jul-13	0	0.000	0.000	0.000	0.000	0.000	0.000	0.000	0.043	0.000
14-Jul-13	0	0.000	0.000	0.000	0.000	0.000	0.000	0.000	0.000	0.000
15-Jul-13	0	0.000	0.000	0.000	0.000	0.000	0.097	0.091	0.175	0.000
16-Jul-13	1	0.004	0.000	0.000	0.000	0.004	0.000	0.000	0.000	0.000
17-Jul-13	0	0.000	0.000	0.000	0.000	0.000	0.000	0.000	0.000	0.000
18-Jul-13	0	0.000	0.000	0.000	0.000	0.000	0.194	0.075	0.023	0.000
19-Jul-13	1	0.000	0.000	0.001	0.000	0.001	0.000	0.000	0.000	0.000
20-Jul-13	0	0.000	0.000	0.000	0.000	0.000	0.000	0.000	0.000	0.000
21-Jul-13	0	0.000	0.000	0.000	0.000	0.000	0.000	0.000	0.000	0.000
22-Jul-13	0	0.000	0.000	0.000	0.000	0.000	0.000	0.000	0.000	0.000
23-Jul-13	0	0.000	0.000	0.000	0.000	0.000	0.000	0.000	0.000	0.000
24-Jul-13	0	0.000	0.000	0.000	0.000	0.000	0.000	0.000	0.000	0.000
25-Jul-13	0	0.000	0.000	0.000	0.000	0.000	0.000	0.000	0.000	0.000
26-Jul-13	0	0.000	0.000	0.000	0.000	0.000	0.000	0.000	0.000	0.000
27-Jul-13	0	0.000	0.000	0.000	0.000	0.000	0.000	0.020	0.192	0.000
28-Jul-13	0	0.000	0.000	0.000	0.000	0.000	0.000	0.000	0.000	0.004
29-Jul-13	0	0.000	0.000	0.000	0.000	0.000	0.080	0.185	0.075	0.000
30-Jul-13	0	0.000	0.000	0.000	0.000	0.000	0.021	0.025	0.040	0.000
31-Jul-13	0	0.000	0.000	0.000	0.000	0.000	0.000	0.000	0.000	0.000
TOTAL	12	0.009	0.000	0.019	0.000	0.028	0.392	0.498	0.776	0.004

ALL FIGURES IN MU's

Date	Shedding due to Transmission/Grid Constraints in Central Sector Stations / TTC / ATC VIOLATION				TOTAL	TOTAL SHEDDING DUE TO GRID RESTRICTIONS	Due to T&D Constraints				
	BSES		NDPL	NDMC			DTL				
	BYPL	BRPL					BSES		NDPL	NDMC	MES
			BYPL	BRPL							
1	12	13	14	15	16=8to15	17=16+7	18	19	20	21	22
01-Jul-13	0.000	0.000	0.000	0.000	0.000	0.004	0.000	0.192	0.059	0.048	0.000
02-Jul-13	0.000	0.000	0.000	0.000	0.189	0.190	0.316	0.117	0.007	0.044	0.000
03-Jul-13	0.000	0.000	0.000	0.000	0.000	0.000	0.000	0.025	0.010	0.000	0.000
04-Jul-13	0.000	0.000	0.000	0.000	0.000	0.000	0.011	0.049	0.013	0.000	0.000
05-Jul-13	0.000	0.000	0.000	0.000	0.105	0.123	0.000	0.002	0.000	0.000	0.000
06-Jul-13	0.000	0.000	0.000	0.000	0.000	0.000	0.000	0.012	0.000	0.000	0.000
07-Jul-13	0.000	0.000	0.000	0.000	0.000	0.000	0.000	0.000	0.000	0.000	0.000
08-Jul-13	0.000	0.000	0.000	0.000	0.000	0.000	0.000	0.000	0.000	0.000	0.000
09-Jul-13	0.000	0.000	0.000	0.000	0.000	0.000	0.181	0.000	0.000	0.011	0.000
10-Jul-13	0.000	0.000	0.000	0.000	0.000	0.000	0.000	0.000	0.003	0.000	0.000
11-Jul-13	0.000	0.000	0.000	0.000	0.000	0.000	0.542	0.335	0.099	0.000	0.000
12-Jul-13	0.000	0.000	0.000	0.000	0.036	0.036	0.000	0.762	0.000	0.000	0.000
13-Jul-13	0.000	0.000	0.000	0.000	0.043	0.043	0.010	0.095	0.000	0.000	0.000
14-Jul-13	0.000	0.000	0.000	0.000	0.000	0.000	0.000	0.045	0.000	0.000	0.000
15-Jul-13	0.000	0.000	0.000	0.000	0.363	0.363	0.045	0.007	0.067	0.000	0.000
16-Jul-13	0.000	0.000	0.000	0.000	0.000	0.004	0.011	0.025	0.000	0.000	0.000
17-Jul-13	0.000	0.000	0.000	0.000	0.000	0.000	0.000	0.057	0.009	0.000	0.000
18-Jul-13	0.000	0.000	0.000	0.000	0.292	0.292	0.086	0.000	0.013	0.000	0.000
19-Jul-13	0.000	0.000	0.000	0.000	0.000	0.001	0.000	0.016	0.000	0.000	0.000
20-Jul-13	0.000	0.000	0.000	0.000	0.000	0.000	0.000	0.004	0.000	0.000	0.000
21-Jul-13	0.000	0.000	0.000	0.000	0.000	0.000	0.000	0.000	0.017	0.000	0.000
22-Jul-13	0.000	0.000	0.000	0.000	0.000	0.000	0.126	0.003	0.002	0.059	0.000
23-Jul-13	0.000	0.000	0.000	0.000	0.000	0.000	0.000	0.000	0.000	0.000	0.000
24-Jul-13	0.000	0.000	0.000	0.000	0.000	0.000	0.000	0.000	0.007	0.000	0.000
25-Jul-13	0.000	0.000	0.000	0.000	0.000	0.000	0.000	0.000	0.000	0.000	0.000
26-Jul-13	0.000	0.000	0.000	0.000	0.000	0.000	0.007	0.007	0.000	0.000	0.000
27-Jul-13	0.000	0.000	0.000	0.000	0.212	0.212	0.000	0.167	0.000	0.000	0.000
28-Jul-13	0.060	0.036	0.179	0.000	0.279	0.279	0.073	0.000	0.008	0.000	0.000
29-Jul-13	0.000	0.000	0.000	0.000	0.340	0.340	0.000	0.465	0.000	0.000	0.000
30-Jul-13	0.000	0.000	0.000	0.000	0.086	0.086	0.016	0.000	0.000	0.000	0.000
31-Jul-13	0.000	0.000	0.000	0.000	0.000	0.000	0.000	0.000	0.000	0.119	0.000
TOTAL	0.060	0.036	0.179	0.000	1.945	1.973	1.424	2.385	0.314	0.281	0.000

ALL FIGURES IN MUs

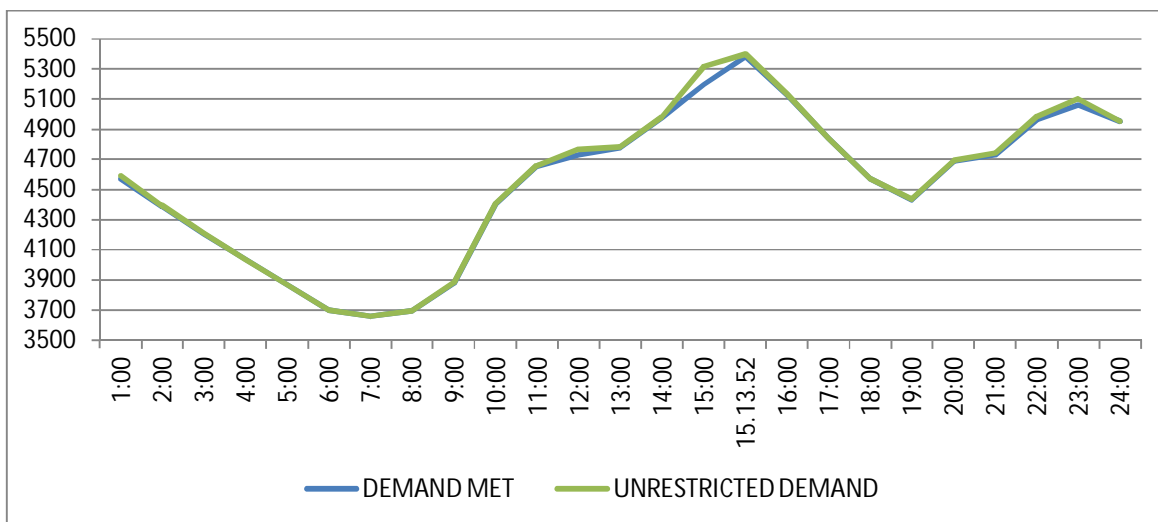
DATE	DUE TO T&D CONSTRAINTS				OTHER AGENCIES LIKE GENCO, BBMB, BTPS ETC.	THEFT PRONE SHEDDING			TOTAL SHEDDING DUE TO T&D CONSTS. & THEFT PRONE	GRAND TOTAL
	DISCOMS					BSES				
	BSES		NDPL	NDMC		BSES		NDPL		
	BYPL	BRPL				BYPL	BRPL			
1	23	24	25		26	27	28	29	30=18 to29	31=30+17
01-Jul-13	0.018	0.242	0.052	0.000	0.407	0.000	0.000	0.000	1.018	1.022
02-Jul-13	0.027	0.093	0.008	0.000	0.072	0.000	0.000	0.000	0.684	0.874
03-Jul-13	0.000	0.254	0.000	0.000	0.094	0.000	0.000	0.000	0.383	0.383
04-Jul-13	0.000	0.138	0.004	0.000	0.039	0.000	0.000	0.000	0.254	0.254
05-Jul-13	0.000	0.057	0.022	0.000	0.017	0.000	0.000	0.000	0.098	0.221
06-Jul-13	0.005	0.074	0.000	0.000	0.012	0.000	0.000	0.000	0.103	0.103
07-Jul-13	0.000	0.010	0.002	0.000	0.000	0.000	0.000	0.000	0.012	0.012
08-Jul-13	0.000	0.000	0.001	0.000	0.005	0.000	0.000	0.000	0.006	0.006
09-Jul-13	0.007	0.188	0.029	0.000	0.019	0.000	0.000	0.000	0.435	0.435
10-Jul-13	0.000	0.000	0.000	0.000	0.000	0.000	0.000	0.003	0.006	0.006
11-Jul-13	0.007	0.056	0.015	0.000	0.000	0.000	0.000	0.000	1.054	1.054
12-Jul-13	0.020	0.240	0.009	0.000	0.000	0.000	0.000	0.001	1.032	1.068
13-Jul-13	0.001	0.001	0.002	0.000	0.028	0.000	0.000	0.000	0.137	0.180
14-Jul-13	0.035	0.000	0.011	0.000	0.000	0.000	0.000	0.000	0.091	0.091
15-Jul-13	0.035	0.023	0.009	0.000	0.036	0.000	0.000	0.000	0.222	0.585
16-Jul-13	0.037	0.078	0.046	0.000	0.000	0.000	0.000	0.001	0.198	0.202
17-Jul-13	0.012	0.048	0.003	0.000	0.025	0.000	0.000	0.001	0.155	0.155
18-Jul-13	0.045	0.007	0.001	0.000	0.000	0.000	0.000	0.000	0.152	0.444
19-Jul-13	0.000	0.002	0.002	0.000	0.002	0.000	0.000	0.000	0.022	0.023
20-Jul-13	0.061	0.000	0.000	0.000	0.000	0.000	0.000	0.000	0.065	0.065
21-Jul-13	0.000	0.036	0.000	0.000	0.003	0.000	0.000	0.000	0.056	0.056
22-Jul-13	0.000	0.004	0.000	0.000	0.000	0.000	0.000	0.001	0.195	0.195
23-Jul-13	0.008	0.021	0.004	0.000	0.048	0.000	0.000	0.001	0.082	0.082
24-Jul-13	0.000	0.032	0.000	0.000	0.000	0.000	0.000	0.000	0.039	0.039
25-Jul-13	0.000	0.005	0.004	0.000	0.000	0.000	0.000	0.000	0.009	0.009
26-Jul-13	0.054	0.000	0.000	0.000	0.000	0.000	0.000	0.002	0.070	0.070
27-Jul-13	0.000	0.000	0.163	0.000	0.010	0.000	0.000	0.000	0.340	0.552
28-Jul-13	0.000	0.089	0.035	0.000	0.000	0.000	0.000	0.002	0.207	0.486
29-Jul-13	0.004	0.028	0.043	0.000	0.138	0.000	0.000	0.003	0.681	1.021
30-Jul-13	0.000	0.007	0.001	0.000	0.000	0.000	0.000	0.002	0.026	0.112
31-Jul-13	0.000	0.002	0.008	0.000	0.000	0.000	0.000	0.000	0.129	0.129
TOTAL	0.376	1.735	0.475	0.000	0.955	0.000	0.000	0.017	7.962	9.935

DATE	(NET CONS.)	MAXI. DEMAND MET DURING THE DAY	TIME OF OCCUR- RENCE OF MAX DEMAND	SHEDDING AT THIS TIME	UN-REST- RICTED DEMAND	MAXIMUM UN-REST- RICTED DEMAND DURING THE DAY	TIME OF MAX. UN-REST. DEMAND	DEMAND AT THAT TIME	SHEDDING AT THAT TIME
	In Mus.	IN MW	IN HRS.	IN MW	IN MW	IN MW	HRS.	IN MW	IN MW
1	32	33	34	35	36=33+35	37=39+40	38	39	40
01-Jul-13	98.719	5220	15:36:55	61	5281	5281	15:36:55	5220	61
02-Jul-13	101.560	5360	15:01:31	106	5466	5466	15:01:31	5360	106
03-Jul-13	105.320	5164	15:33:43	3	5167	5167	15:33:43	5164	3
04-Jul-13	100.363	5384	15:13:52	14	5398	5398	15:13:52	5384	14
05-Jul-13	98.020	5214	15:17:56	0	5214	5214	15:17:56	5214	0
06-Jul-13	98.242	4811	00:00:12	0	4811	4811	00:00:12	4811	0
07-Jul-13	90.898	4681	00:00:22	0	4681	4681	00:00:22	4681	0
08-Jul-13	94.599	5015	14:47:13	0	5015	5015	14:47:13	5015	0
09-Jul-13	89.922	4821	17:04:20	0	4821	4821	17:04:20	4821	0
10-Jul-13	87.620	4545	14:27:10	0	4545	4545	14:27:10	4545	0
11-Jul-13	91.058	4817	15:27:14	81	4898	4898	15:27:14	4817	81
12-Jul-13	92.166	4657	16:35:58	3	4660	4660	16:35:58	4657	3
13-Jul-13	88.774	4623	23:37:14	22	4645	4645	23:37:14	4623	22
14-Jul-13	89.347	4432	23:15:08	2	4434	4434	23:15:08	4432	2
15-Jul-13	94.222	4998	15:31:23	15	5013	5013	15:31:23	4998	15
16-Jul-13	99.563	4811	22:51:26	2	4813	4813	22:51:26	4811	2
17-Jul-13	94.772	5039	15:44	0	5039	5039	15:44	5039	0
18-Jul-13	96.843	5096	15:19:18	16	5112	5112	15:19:18	5096	16
19-Jul-13	97.361	5065	15:22:02	18	5083	5083	15:22:02	5065	18
20-Jul-13	80.700	4620	00:02:09	0	4620	4620	00:02:09	4620	0
21-Jul-13	80.197	4269	22:51:51	3	4272	4272	22:51:51	4269	3
22-Jul-13	84.328	4386	15:27:24	1	4387	4387	15:27:24	4386	1
23-Jul-13	89.497	4749	22:49:23	0	4749	4749	22:49:23	4749	0
24-Jul-13	93.552	4967	15:04:06	28	4995	4995	15:04:06	4967	28
25-Jul-13	88.223	4597	11:52:17	0	4597	4597	11:52:17	4597	0
26-Jul-13	88.603	4659	15:17:11	2	4661	4659	15:17:11	4659	2
27-Jul-13	88.124	4419	23:28:18	0	4419	4419	23:28:18	4419	0
28-Jul-13	88.730	4674	22:00	24	4698	4776	23:00	4581	195
29-Jul-13	95.558	5004	15:16:22	114	5118	5118	15:16:22	5004	114
30-Jul-13	96.176	4893	15:25:17	3	4896	4896	15:25:17	4893	3
31-Jul-13	90.965	4564	15:15:13	0	4564	4564	15:15:13	4564	0
TOTAL	2874.022	5384 04.07.2013	15:13:52	14	5398 02.07.2013	5466	15:01:31	5360	106

10 **LOAD PATTERN OF DELHI ON THE DAY OF PEAK DEMAND MET DURING JULY 2013 ON 04.07.2013- 5384MW AT 15.13.52HRS.**

All figures in MW

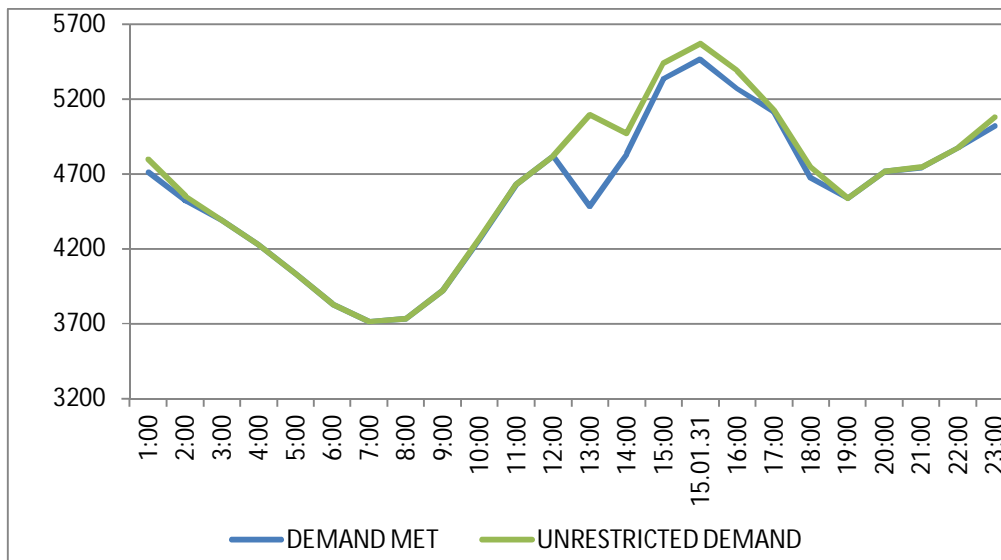
Hrs.	Demand	Load Shedding	Un-Restricted Demand
01.00	4571	19	4590
02.00	4387	6	4393
03.00	4206	4	4210
04.00	4036	1	4037
05.00	3870	0	3870
06.00	3702	0	3702
07.00	3659	0	3659
08.00	3694	4	3698
09.00	3877	5	3882
10.00	4404	4	4408
11.00	4657	3	4660
12.00	4729	38	4767
13.00	4781	4	4785
14.00	4977	5	4982
15.00	5197	119	5316
15.13.52	5384	14	5398
16.00	5127	6	5133
17.00	4841	2	4843
18.00	4572	0	4572
19.00	4431	4	4435
20.00	4690	2	4692
21.00	4730	11	4741
22.00	4965	20	4985
23.00	5061	41	5102
24.00	4952	0	4952
TOTAL	100.363	0.254	100.617



11 LOAD PATTERN OF DELHI ON THE DAY OF MAXIMUM UN-RESTRICTED DEMAND DURING JULY 2013 ON 02.07.2013- 5466MW at 15.01.31HRS.

All figures in MW

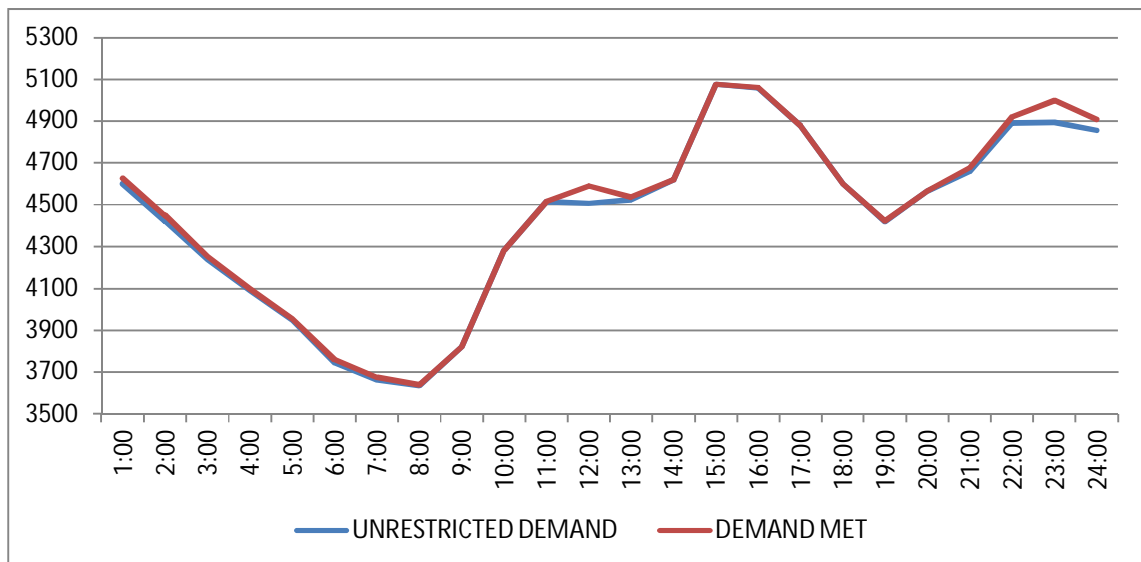
Hrs.	Demand	Load Shedding	Un-Restricted Demand
1:00	4712	88	4800
2:00	4524	33	4557
3:00	4394	0	4394
4:00	4232	0	4232
5:00	4036	0	4036
6:00	3832	0	3832
7:00	3714	0	3714
8:00	3737	0	3737
9:00	3922	0	3922
10:00	4264	8	4272
11:00	4629	2	4631
12:00	4821	0	4821
13:00	4486	610	5096
14:00	4835	135	4970
15:00	5337	106	5443
15.01.31	5466	106	5572
16:00	5270	120	5390
17:00	5117	11	5128
18:00	4676	69	4745
19:00	4537	0	4537
20:00	4716	0	4716
21:00	4744	2	4746
22:00	4875	0	4875
23:00	5023	55	5078
24:00	4910	56	4966
TOTAL			



12 LOAD PATTERN OF DELHI ON THE DAY OF MAXIMUM ENERGY CONSUMED DURING JULY 2013 – 03.07.2013 – 105.320 Mus

All figures in MW

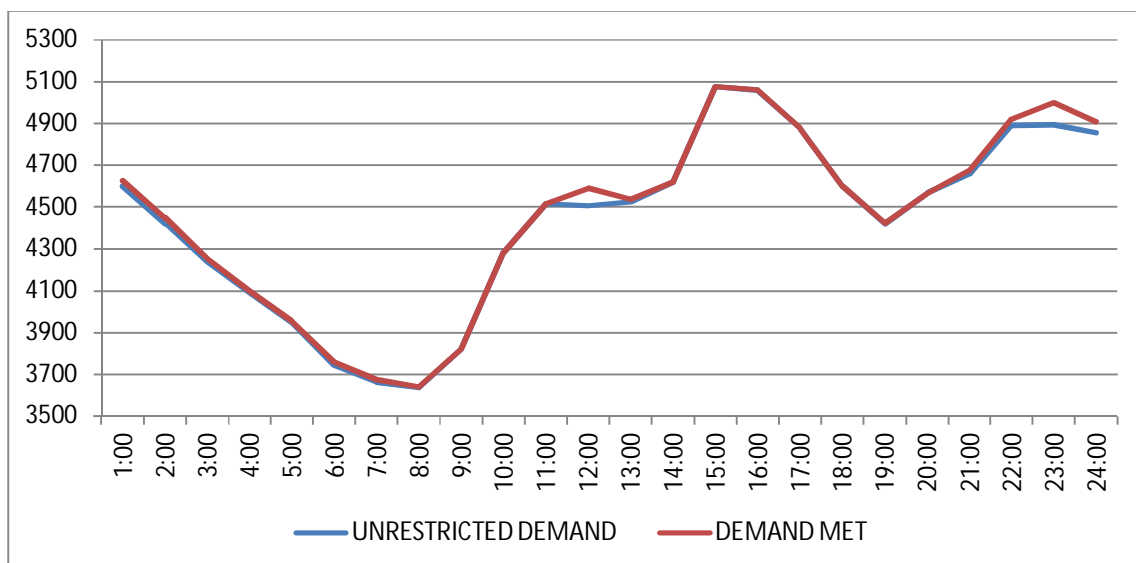
Hrs.	Demand	Load Shedding	Un-Restricted Demand
1:00	4600	29	4629
2:00	4422	28	4450
3:00	4238	16	4254
4:00	4089	11	4100
5:00	3949	6	3955
6:00	3745	13	3758
7:00	3664	11	3675
8:00	3638	1	3639
9:00	3821	0	3821
10:00	4282	0	4282
11:00	4516	0	4516
12:00	4508	83	4591
13:00	4525	12	4537
14:00	4621	0	4621
15:00	5076	0	5076
16:00	5058	3	5061
17:00	4876	0	4876
18:00	4599	0	4599
19:00	4420	2	4422
20:00	4565	0	4565
21:00	4658	20	4678
22:00	4892	29	4921
23:00	4893	105	4998
24:00	4855	55	4910
TOTAL	105.320	0.383	105.703



13 LOAD PATTERN OF DELHI ON THE DAY OF MAXIMUM UNRESTRICTED ENERGY DEMAND DURING JULY 2013 – 03.07.2013 – 105.703 Mus

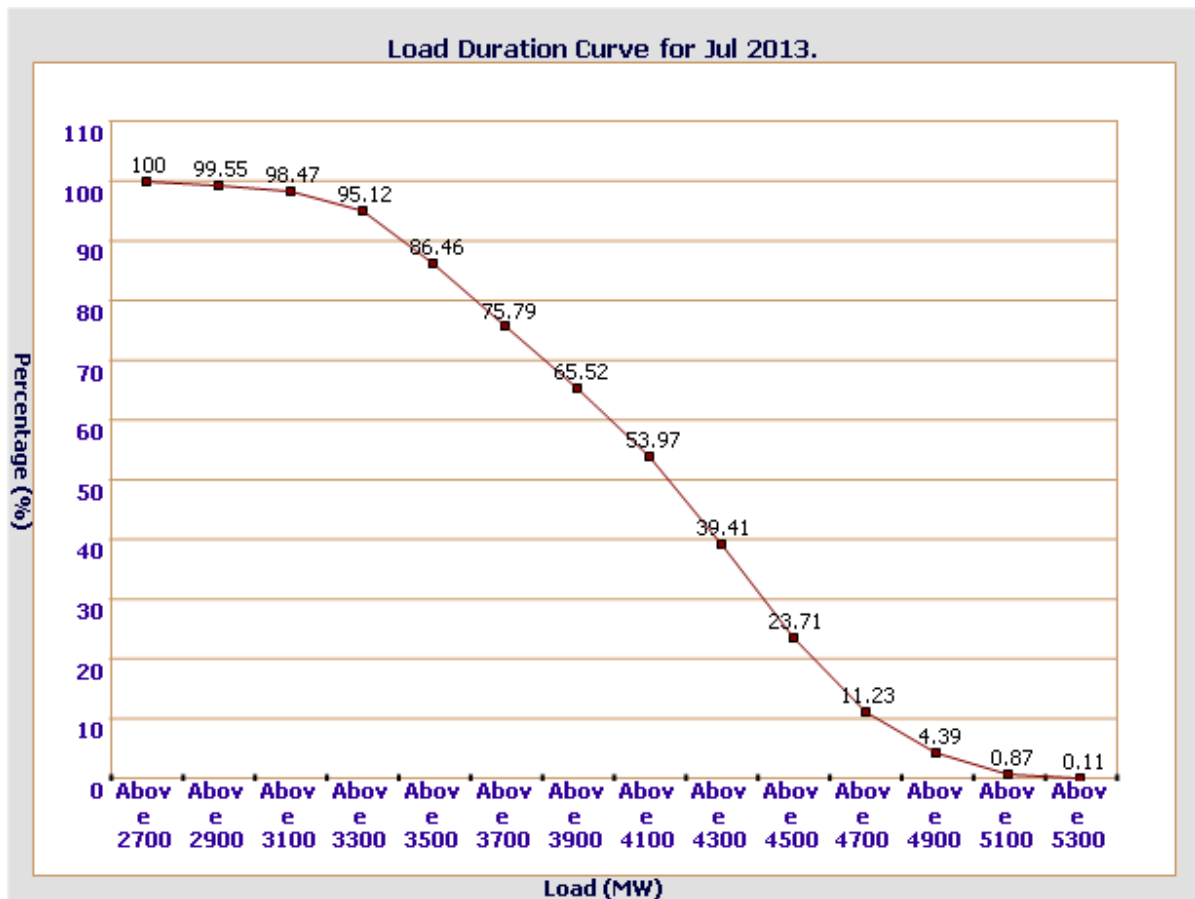
All figures in MW

Hrs.	Demand	Load Shedding	Un-Restricted Demand
1:00	4600	29	4629
2:00	4422	28	4450
3:00	4238	16	4254
4:00	4089	11	4100
5:00	3949	6	3955
6:00	3745	13	3758
7:00	3664	11	3675
8:00	3638	1	3639
9:00	3821	0	3821
10:00	4282	0	4282
11:00	4516	0	4516
12:00	4508	83	4591
13:00	4525	12	4537
14:00	4621	0	4621
15:00	5076	0	5076
16:00	5058	3	5061
17:00	4876	0	4876
18:00	4599	0	4599
19:00	4420	2	4422
20:00	4565	0	4565
21:00	4658	20	4678
22:00	4892	29	4921
23:00	4893	105	4998
24:00	4855	55	4910
TOTAL	105.320	0.383	105.703



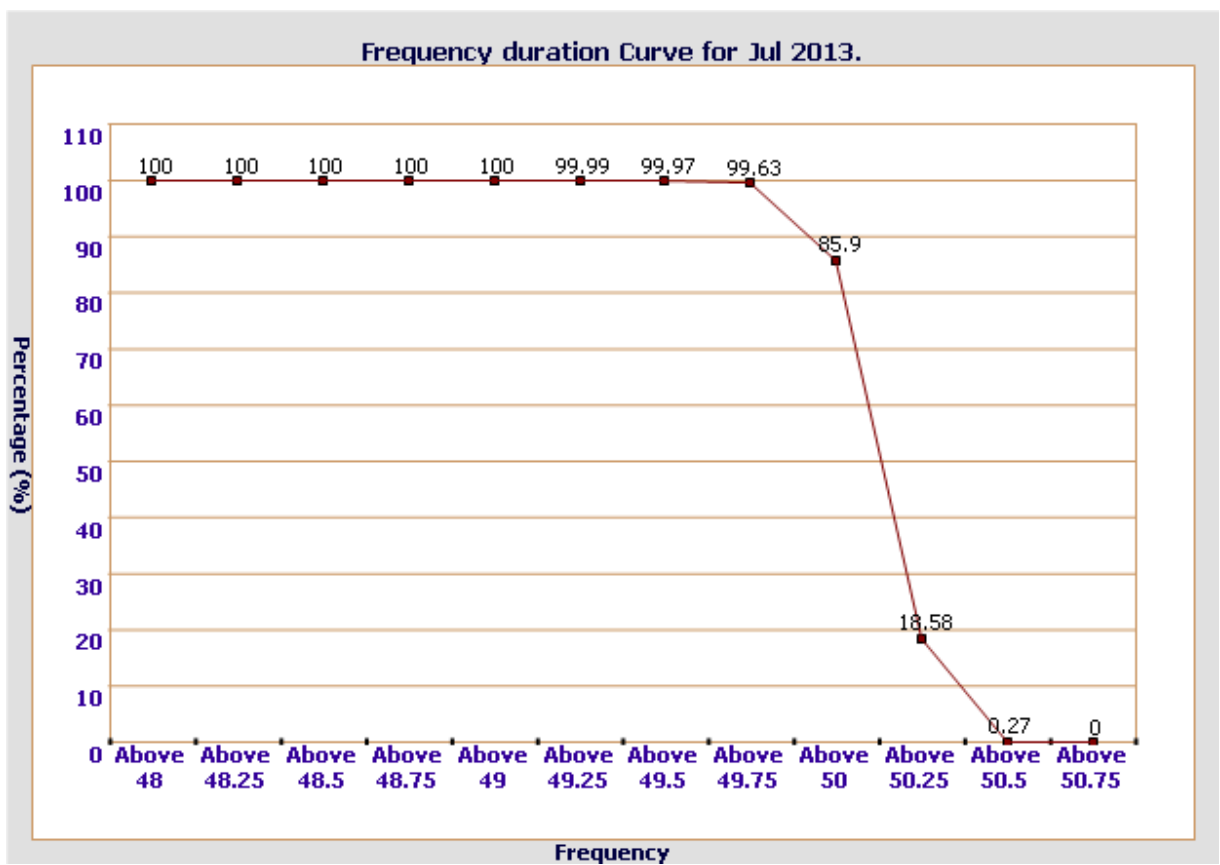
14 LOAD DURATION CURVE FOR JULY 2013

Load in MW	Percentage of Time
Above 2700	100 %
Above 2900	99.55 %
Above 3100	98.47 %
Above 3300	95.12 %
Above 3500	86.46 %
Above 3700	75.79 %
Above 3900	65.52 %
Above 4100	53.97 %
Above 4300	39.41 %
Above 4500	23.71 %
Above 4700	11.23 %
Above 4900	4.39 %
Above 5100	0.87 %
Above 5300	0.11 %



FREQUENCY ANALYSIS FOR THE MONTH OF JULY 2013

Frequency Range in Hz.	Percentage of time
Above 49	100 %
Above 49.25	99.99 %
Above 49.5	99.97 %
Above 49.75	99.63 %
Above 50	85.9 %
Above 50.25	18.58 %
Above 50.5	0.27 %
Above 50.75	0 %



16 VOLTAGE PROFILE OF 220 KV SUB-STATIONS IN DELHI DURING JULY 2013

All figures in kV

Date	NARELA		GAZIPUR	
	Max	Min	Max	Min
01-Jul-13	219.51	204.93	219.51	198.36
02-Jul-13	219.64	208.54	219.76	204.03
03-Jul-13	220.54	210.09	219.89	204.29
04-Jul-13	220.80	210.22	221.05	201.19
05-Jul-13	220.92	207.90	224.28	220.29
06-Jul-13	221.18	210.48	217.06	203.00
07-Jul-13	220.15	211.77	220.41	205.45
08-Jul-13	222.09	211.90	222.99	203.77
09-Jul-13	224.92	211.12	228.92	--
10-Jul-13	223.12	211.51	221.44	--
11-Jul-13	222.47	204.42	218.99	--
12-Jul-13	223.26	211.51	224.66	203.38
13-Jul-13	221.83	209.58	223.38	203.51
14-Jul-13	221.83	210.22	222.86	211.51
15-Jul-13	220.92	208.16	220.28	220.16
16-Jul-13	222.09	211.38	220.92	204.80
17-Jul-13	220.92	212.41	221.57	204.80
18-Jul-13	222.99	208.29	226.99	212.54
19-Jul-13	227.86	208.54	226.21	201.06
20-Jul-13	223.76	213.70	228.53	207.38
21-Jul-13	224.02	213.06	224.66	206.09
22-Jul-13	223.38	212.03	222.47	208.29
23-Jul-13	222.09	210.22	220.80	--
24-Jul-13	222.09	210.22	220.15	202.35
25-Jul-13	222.09	210.87	221.70	206.74
26-Jul-13	223.12	211.90	221.57	205.45
27-Jul-13	222.21	209.96	221.05	205.056
28-Jul-13	222.21	--	219.89	206.87
29-Jul-13	224.79	212.54	220.92	199.00
30-Jul-13	225.95	212.15	226.73	197.71
31-Jul-13	226.21	216.02	226.08	210.61

17 VOLTAGE PROFILE OF 400 KV SUB-STATIONS IN DELHI DURING JULY 2013

All figures in kV

Date	400kV Bamnauli Grid Sub-Station				
	Max KV	Max Time	Min KV	Min Time	Average KV
01-Jul-13	407.78	06.07.45	375.89	14.21.09	395.38
02-Jul-13	408.48	06.05.13	387.85	14.54.41	398.85
03-Jul-13	410.83	06.06.40	390.19	14.46.29	400.63
04-Jul-13	410.12	06.03.58	387.85	14.32.39	399.40
05-Jul-13	410.12	07.01.51	383.86	14.34.03	398.65
06-Jul-13	410.83	06.15.59	392.07	14.51.54	400.20
07-Jul-13	409.89	08.04.36	394.41	00.19.43	403.03
08-Jul-13	412.47	08.02.41	395.82	11.52.33	400.66
09-Jul-13	415.05	03.53.14	393.47	14.45.53	404.88
10-Jul-13	413.41	04.03.56	392.30	19.47.57	402.08
11-Jul-13	411.06	04.03.03	387.38	14.38.10	399.57
12-Jul-13	412.47	07.56.59	390.89	14.45.18	400.56
13-Jul-13	410.36	06.09.21	386.67	14.43.03	397.64
14-Jul-13	409.89	06.13.01	392.30	00.05.56	400.52
15-Jul-13	408.95	06.05.25	384.09	14.43.50	396.82
16-Jul-13	408.01	06.57.02	389.25	13.50.59	397.99
17-Jul-13	--	--	392.07	19.48.56	399.87
18-Jul-13	411.53	06.05.49	382.92	14.28.45	398.49
19-Jul-13	411.53	06.04.16	384.56	14.30.39	398.44
20-Jul-13	412.47	04.05.42	395.12	19.45.46	404.33
21-Jul-13	413.41	06.07.38	392.30	22.24.00	403.98
22-Jul-13	410.12	04.03.08	391.36	11.39.38	400.09
23-Jul-13	410.12	06.10.48	385.50	14.40.23	395.77
24-Jul-13	409.89	08.03.19	387.38	14.32.44	398.40
25-Jul-13	411.30	06.09.15	394.65	14.38.47	402.10
26-Jul-13	415.05	04.38.23	389.25	14.49.20	402.10
27-Jul-13	412.23	04.54.47	385.50	14.21.02	400.52
28-Jul-13	411.53	06.57.59	391.60	22.30.24	402.23
29-Jul-13	410.36	06.04.44	384.09	14.40.09	398.14
30-Jul-13	412.47	06.05.13	390.43	14.57.05	401.36
31-Jul-13	414.34	05.10.25	393.71	11.10.59	404.24

All figures in kV

Date	400kV Bawana Grid Sub-Station				
	Max KV	Max Time	Min KV	Min Time	Average KV
01-Jul-13	412.23	06.07.45	388.78	14.38.30	404.54
02-Jul-13	412.47	06.05.43	398.16	14.54.11	406.32
03-Jul-13	410.83	06.06.40	390.19	14.46.29	400.63
04-Jul-13	413.87	07.04.43	397.46	14.31.08	405.83
05-Jul-13	414.81	06.04.57	391.41	14.32.53	406.41
06-Jul-13	415.52	06.08.28	399.81	14.51.34	406.74
07-Jul-13	413.17	18.05.08	400.98	01.18.43	406.96
08-Jul-13	415.75	08.01.21	402.62	00.13.59	408.60
09-Jul-13	420.21	18.57.37	402.62	14.10.31	411.08
10-Jul-13	416.69	04.01.56	400.74	19.47.37	408.24
11-Jul-13	414.34	03.59.13	395.82	14.37.20	406.00
12-Jul-13	416.16	07.55.09	398.16	14.50.19	406.99
13-Jul-13	415.52	06.09.01	395.12	14.44.43	404.98
14-Jul-13	414.81	06.12.21	398.63	14.42.55	406.50
15-Jul-13	413.41	06.05.04	392.77	14.41.50	403.99
16-Jul-13	410.83	18.03.16	398.16	00.00.06	403.74
17-Jul-13	412.70	00.00.00	400.51	22.10.54	406.82
18-Jul-13	416.22	06.07.38	391.60	14.28.55	405.70
19-Jul-13	416.92	06.07.26	392.77	14.29.39	405.28
20-Jul-13	418.33	04.04.02	401.68	19.45.46	410.44
21-Jul-13	418.10	06.06.48	400.51	22.39.21	409.79
22-Jul-13	415.98	06.12.56	398.40	11.46.59	406.82
23-Jul-13	413.87	06.06.48	393.47	14.40.13	402.48
24-Jul-13	414.34	08.04.50	396.05	14.32.54	404.05
25-Jul-13	412.23	18.52.13	398.63	14.49.48	406.23
26-Jul-13	409.89	18.07.25	398.16	14.48.40	403.81
27-Jul-13	415.98	04.54.56	395.12	4.21.03	407.20
28-Jul-13	411.53	15.02.45	398.40	14.29.51	404.55
29-Jul-13	406.84	18.14.25	392.30	14.39.39	399.60
30-Jul-13	412.70	17.54.16	396.29	14.56.25	404.70
31-Jul-13	416.22	05.10.25	400.27	14.39.11	408.91

18 DETAILS OF LUMPED CAPACITORS AT NEAREST 220 KV SUBSTATION

Sl. No	SUB-STATION	INSTALLED CAPACITY			
		66KV	33KV	11KV	TOTAL
1	IP YARD		30		30
1	Kamla Market			16.35	16.35
2	Minto Road				0
3	GB Pant Hosp			15.88	15.88
4	Delhi Gate			10.9	10.9
5	Tilakmarg			5.04	5.04
7	Cannaught Place			10.08	10.08
8	Kilokri		10.08	10.48	20.56
9	NDSE				0
11	Nizamuddin				0
12	Exhibition-I				0
13	Exhibition-II				0
14	Defence Colony				0
15	IG Stadium		10.08	5.45	15.53
16	Lajpat Nagar				0
17	IP Estate			10.9	10.9
	LT BYPL				5.6
		0	50.16	85.08	140.84
2	Electric Lane				
1	Electric Lane			5.04	5.04
2	Scindia House			5.04	5.04
3	Raisina Road			10.08	10.08
4	Raja Bazar			10.08	10.08
	LT NDMC				12
		0	0	30.24	42.24
3	RPH Station		20		20
1	Lahori Gate			10.49	10.49
2	Jama Masjid			10.48	10.48
4	Kamla Market				0
5	Minto Road			10.9	10.9
6	GB Pant Hosp				0
7	IG Stadium				0
	LT BYPL				3
		0	20	31.87	54.87
4	Parkstreet S/stn	20	20		40
1	Shastri Park		10.896	5.45	16.346
2	Faiz Road			18.05	18.05
3	Motia Khan			16.3	16.3
4	Prasad Nagar			16.25	16.25
5	Anand Parbat			10.8	10.8
6	Shankar Road			5.04	5.04
7	Rama Road			0	0
8	Baird Road			10.08	10.08
9	Hanuman Road			5.04	5.04
10	Pusa			5.44	5.44
11	Ridge Valley			0	0
12	B. D. Marg			0	0
13	Nirman Bhawan			5.04	5.04
	LT BYPL			0	30.1
		20.00	30.90	97.49	178.486
5	Naraina S/stn		20	5.04	25.04
1	DMS			10.85	10.85
2	Mayapuri		10.87	10.4	21.27
3	Inderpuri		10	4.8	14.8
4	Rewari line				0
5	Khyber Lane		10.05		10.05
6	Kirbi Place		10.05		10.05
7	Payal			7.2	7.2
8	Saraswati Garden			10.88	10.88
		0	60.97	49.17	110.14

Sl. No	SUB-STATION	INSTALLED CAPACITY			
		66KV	33kV	11kV	TOTAL
6	Mehrauli S/stn	80		5.04	85.04
1	Adchini			14.61	14.61
2	Andheria Bagh			10.85	10.85
3	IIT			10.9	10.9
4	JNU		10.03	10.03	20.06
5	Bijwasan			15.47	15.47
6	DC Saket			9.98	9.98
7	Malviya Nagar				0
8	C Dot			10.48	10.48
9	Vasant kunj B-Blk	21.79		10.9	32.69
10	Vasant kunj C-Blk	20.16		10.48	30.64
11	Palam				0
12	IGNOU			5.04	5.04
13	R. K. Puram-I			10.07	10.07
14	Vasant Vihar			19.25	19.25
15	Pusp Vihar			10.44	10.44
16	Bhikaji Cama Place		10.08	10.07	20.15
	LT BRPL				25
		121.95	20.11	163.61	330.67
7	Vasantkunj S/stn	40		5.04	45.04
1	R. K. Puram-II			10.08	10.08
2	Vasant kunj C-Blk				0
3	Vasant kunj D-Blk			9.63	9.63
4	Ridge Valley				0
	LT BRPL				33.2
		40	0	24.75	97.95
8	Okhla S/stn	60	10	5.04	75.04
1	Balaji			10.8	10.8
2	East of Kailash			15.89	15.89
3	Alaknanda			16.3	16.3
4	Malviya Nagar	21.79		10.85	32.64
5	Masjid Moth			16.3	16.3
6	Nehru Place			21.34	21.34
7	Okhla Ph-I	21.79		16.3	38.09
8	Okhla Ph-II		20.93	15.47	36.4
9	Shivalik			10.8	10.8
10	Batra			15.9	15.9
11	VSNL			10.9	10.9
12	Siri Fort			10.49	10.49
13	Tuglakabad			10.85	10.85
	LT BRPL				59
		103.58	30.93	187.23	380.74
9	Lodhi Road S/stn		20		20
1	Defence Colony		14.85		14.85
2	Hudco		10.9		10.9
3	Lajpat Nagar		10.9		10.9
4	Nizamuddin		10.44		10.44
5	Vidyut Bhawan				0
6	Ex. Gr. II				0
7	IHC				0
	LT BRPL				42
		0	67.09	0	109.09
10	Sarita Vihar S/stn	20		5.04	25.04
1	Sarita Vihar			10.07	10.07
2	MCIE			10.06	10.06
3	Mathura Road	20.16		11.69	31.85
4	Jamia Millia			10.89	10.89
5	Sarai Julena		10.08	16.29	26.37
6	Jasola			5.44	5.44
	LT BRPL				23.6
		40.16	10.08	69.48	143.32

Sl. No	SUB-STATION	INSTALLED CAPACITY			
		66KV	33kV	11kV	TOTAL
11	Wazirabad				
1	Bhagirathi		14.4	10.9	25.3
2	Ghonda	21.79	22.56	15.94	60.29
3	Seelam Pur		10.08	21.39	31.47
4	Dwarkapuri			15.46	15.46
5	Nandnagri	20.16		16.35	36.51
6	Yamuna Vihar			16.2	16.2
7	East of Loni Road			10.8	10.8
8	Shastri Park			10.9	10.9
9	Karawal Nagar			5.4	5.4
10	Sonia Vihar			7.2	7.2
	LT BYPL				10
		41.95	47.04	130.54	229.53
12	Geeta Colony				
1	Geeta Colony				0
2	Kanti Nagar			10.49	10.49
3	Kailash Nagar			10.9	10.9
4	Seelam Pur			15.48	15.48
5	Shakar Pur				0
	LT BYPL				5.8
		0	0	36.87	42.67
13	Gazipur S/stn	40		5.04	45.04
1	Dallupura	28.8		10.9	39.7
2	Vivek Vihar			9.57	9.57
3	GT Road			10.85	10.85
4	Kondli	20.16		10.85	31.01
5	MVR-I			10.9	10.9
6	MVR-II	20.16		10.9	31.06
7	PPG Ind. Area			10.06	10.06
	LT BYPL				20.6
		109.12	0	79.07	208.79
14	Patparganj S/stn	40	20	5.04	65.04
1	GH-I	19.89		10.45	30.34
2	GH-II	20.09		10.9	30.99
3	CBD		10.03	15.48	25.51
4	Guru Angad Nagar			15.49	15.49
5	Karkadooma		10.8	10.44	21.24
6	Preet Vihar			10.07	10.07
7	CBD-II			10.8	10.8
8	Shakarpur			10.8	10.8
9	Jhilmil			10.8	10.8
10	Dilshad Garden	20.16		16.35	36.51
11	Khichripur	21.79		10.49	32.28
12	Mother Dairy				0
13	Scope Building				0
14	Vivek Vihar				0
15	Akhardham			14.6	14.6
	LT BYPL				23.3
		121.93	40.83	151.71	337.77
15	Najafgarh S/stn	60		5.04	65.04
1	A4 Paschim Vihar			10.8	10.8
2	Nangloi	21.73		15.84	37.57
3	Nangloi W/W	20.89		10.85	31.74
4	Pankha Road			15.88	15.88
5	Jaffarpur			15.43	15.43
7	Inst. Area Janakpuri			17.6	17.6
8	Paschimpuri		10.05	15.47	25.52
9	Paschim Vihar	41.83		15.43	57.26
10	Mukherjee Park			20.83	20.83
11	Udyog Nagar			10.43	10.43
12	Choukhandi			10.07	10.07
	LT BRPL				27
		144.45	10.05	163.67	345.17

Sl. No	SUB-STATION	INSTALLED CAPACITY			
		66KV	33kV	11kV	TOTAL
16	Pappankalan-I S/stn	20		5.04	25.04
1	Bindapur Grid G-3 PPK	21.73		15.85	37.58
2	Bodella-I	20.1		16.24	36.34
3	Bodella-II	21.73		17.64	39.37
4	DC Janakpuri			10.03	10.03
5	G-2 PPK			10.8	10.8
6	G-5 PPK			15.51	15.51
7	G-6 PPK			5.4	5.4
8	G-15 PPK			10.8	10.8
9	Harinagar	21.18		16.25	37.43
10	Rewari line			5.44	5.44
	LT BRPL				13.5
		104.74	0	129	247.24
17	BBMB Rohtak Road				
1	S.B. Mill			10.07	10.07
2	Rama Road			10.88	10.88
3	Ram Pura			10.48	10.48
4	Rohtak Road			8.04	8.04
5	Vishal			10.4	10.4
6	Tri Nagar			5.44	5.44
7	Madipur			10.43	10.43
8	Sudershan Park			10.08	10.08
9	Kirti Nagar			5.44	5.44
		0	0	81.26	81.26
18	Shalimarbagh S/stn		40	6	46
1	S.G.T. Nagar			5.44	5.44
2	Wazirpur-1			17.18	17.18
3	Wazirpur-2			11.39	11.39
4	Ashok Vihar			5.44	5.44
5	Rani Bagh			10.88	10.88
6	Haiderpur			11.39	11.39
7	SMB FC			5.44	5.44
8	SMB KHOSLA			5.44	5.44
	LT TPDDL				30
		0	40	78.6	148.6
19	Subzimandi S/stn			6	6
1	Shakti Nagar			5.94	5.94
2	Gulabibagh			10.88	10.88
3	Shahzadabagh			13.68	13.68
4	DU			5.44	5.44
5	Tripolia			10.88	10.88
	B. G. Road			5.4	5.4
	LT BYPL				0.9
	LT TPDDL				20
		0	0	58.22	79.12
20	Narela S/stn	40		5.04	45.04
1	A-7 Narela			10.88	10.88
2	AlR Kham pur			6	6
3	Ashok vihar			10.48	10.48
4	Azad Pur			5.44	5.44
5	Tri Nagar			5.44	5.44
6	Badli	20		5.95	25.95
7	DSIDC Narela-1			5.95	5.95
8	GTK			5.44	5.44
9	Jahangirpuri	20	10	0	30
10	Bhalswa			3.6	3.6
	LT TPDDL				10
		80	10	64.22	164.22

Sl. No	SUB-STATION	INSTALLED CAPACITY			
		66KV	33kV	11kV	TOTAL
21	Gopalpur S/stn		30	5.04	35.04
1	Azad Pur			10.88	10.88
2	Hudson Lane			5.44	5.44
3	Wazirabad			2.4	2.4
4	Indra Vihar			5.44	5.44
6	GTK Road			5.94	5.94
7	Jahangirpuri		10	5.95	15.95
8	Civil lines			5.44	5.44
9	Pitam Pura-1			5.44	5.44
10	Pitam Pura-3			5.44	5.44
11	Air Khampur			5.95	5.95
12	SGT Nagar			5.95	5.95
13	Tiggipur			10.88	10.88
	LT TPDDL				29
		0	40	80.19	149.19
22	Rohini S/stn	40		6	46
1	Rohini Sec-22			10.88	10.88
2	Rohini Sec-23	20		5.44	25.44
3	Rohini Sec-24			5.44	5.44
4	Rohini-1			5.44	5.44
5	Rohini-3			5.95	5.95
6	Rohini-4			11.39	11.39
7	Rohini-5			11.39	11.39
8	Rohini-6			5.95	5.95
9	Mangolpuri-1			16.83	16.83
10	Mangolpuri-2	20		5.94	25.94
11	Pitam Pura-1	20		5.04	25.04
12	Pitam Pura-2			10.48	10.48
13	Rohini DC-1			14.4	14.4
	LT TPDDL				30
		100	0	120.57	250.57
23	Kanjhawala S/stn	20		5.04	25.04
1	Bawana Clear Water			10.88	10.88
2	Pooth Khoord			5.44	5.44
		20	0	21.36	41.36
24	BAWANA S/stn				
1	Bawana S/stn No. 6			10.88	10.88
2	Bawana S/stn No. 7				0
		0	0	10.88	10.88
25	Kashmeregate S/stn			5.04	5.04
1	Civil lines			5.44	5.44
2	Town Hall			8.64	8.64
3	Fountain			5.45	5.45
	LT BYPL				2.7
		0	0	24.57	27.27
26	Pappankalan-II				
1	DMRC-I				0
2	DMRC-II				0
27	Trauma Center (AIIMS)				
1	AIIMS		13.26	5.04	18.3
2	Trauma Center			10.08	10.08
3	Netaji Nagar			15.12	15.12
4	Sanjay Camp			10.08	10.08
5	Kidwai Nagar			5.04	5.04
6	SJ Airport			5.04	5.04
	Race Course			5.04	5.04
		0	13.26	55.44	68.7

Sl. No	SUB-STATION	INSTALLED CAPACITY			
		66KV	33kV	11kV	TOTAL
28	MUNDKA				
	Rohini-2			11.39	11.39
	LT BRPL				18.5
		0	0	11.39	29.89
29	DSIDC BAWANA				
	DSIDC NRL-1	20			20
	DSIDC NRL-2			10.88	10.88
		20	0	10.88	30.88
30	RIDGE VALLEY				
	Keventry Diary			10.08	10.08
	Nehru Park			5.04	5.04
	Bapu Dham			10.08	10.08
		0	0	25.2	25.2
31	IP EXTN (PRAGATI)				
	Vidyut Bhawan			10.08	10.08
	Dalhousie Road			5.04	5.04
	School Lane			5.04	5.04
	LT NDMC				12.29
		0	0	20.16	32.45
	TOTAL CAPACITY	1067.9	491.4	2092.7	4139

Utility	HT	LT	Total
BYPL	864	102	966
TPDDL	657	119	776
NDMC	180	24	204
DTL	754	0	754
BRPL	1158	242	1400
RPH	20	0	20
MES	20	0	20
TOTAL	3652	487	4139

20 DETAILS OF BREAK-DOWNS DURING THE MONTH OF JULY 2013

SL NO	OCCURRENCE OF BREAK-DOWN		DETAILS OF THE BREAKDOWN	TIME OF RESTORATION		REMARKS
	DATE	TIME		DATE	TIME	
1	01.07.13	18:26	220kV BAMNAULI-PAPPANKALAN-I CKT-I	01.07.13	18:45	PEACOCK ELECTROCUTED AT BAMNAULI YARD. CKT TRIPPED ON A/R,A&B-PH,186A&B AT PPK-1.
2	01.07.13	18:26	220kV BAMNAULI-PAPPANKALAN-I CKT-II	01.07.13	18:43	AT BAMNAULI CKT TRIPPED ON D/P,A-PH,Z-2,186A&B. PEACOCK ELECTROCUTED AT BAMNAULI YARD. AT PPK-1 CKT TRIPPED ON A/R,A&B-PH,186A&B.
3	01.07.13	18:26	220 KV TRAUMA CENTER-RIDGE VALLEY CKT-2	01.07.13	18:47	AT RV CKT TRIPPED ON GENERAL TRIP,DEF,86A&B,RXEG,27-1 & 27-2. NO TRIPPING AT TRAUMA CENTER.
4	01.07.13	19:46	GOPALPUR 220/33kV 100MVA Tx-II	01.07.13	20:14	33KV I/C-1 TRIPPED ON 51CX.
5	02.07.13	0:14	PATPARGANJ 220/66kV 100MVA Tx-I	02.07.13	0:19	66KV I/C-1 TRIPPED ON O/C,51AX.
6	02.07.13	12:54	220KV WAZIRABAD - MANDOLA CKT-IV	02.07.13	13:24	AT MDL: D/P,R-N PH,Z-2,DIST.-12.69KM AT WZB: D/P,R-PH,Z-2
7	02.07.13	12:54	220KV WAZIRABAD-GEETA COLONY CKT-II	02.07.13	13:24	AT GEETA COLONY CKT TRIPPED ON D/P, A,B&C-PH. NO TRIPPING AT WZB.
8	02.07.13	12:54	220KV WAZIRABAD-GEETA COLONY CKT-I	02.07.13	13:04	AT GEETA COLONY CKT TRIPPED ON D/P, A,B&C-PH. NO TRIPPING AT WZB.
9	02.07.13	17:35	WAZIRABAD 220/66kV 100MVA Tx-III	02.07.13	17:55	TX TRIPPED ON E/F. BIRDAGE REPORTED IN YARD.
10	02.07.13	17:35	220KV WAZIRABAD-GEETA COLONY CKT-II	02.07.13	17:49	AT GEETA COLONY: D/P, A,B&C-PH, DIST.-7.952KM NO TRIPPING AT WZB.
11	02.07.13	17:35	220KV WAZIRABAD-GEETA COLONY CKT-I	02.07.13	17:49	AT GEETA COLONY: D/P, A,B&C-PH, DIST.-7.952KM NO TRIPPING AT WZB.
12	03.07.13	11:30	RIDGE VALLEY 220/66kV 160MVA Tx-II	03.07.13	11:45	66KV I/C-2 TRIPPED ON 51N(E/F)
13	03.07.13	11:30	RIDGE VALLEY 220/66kV 160MVA Tx-I	03.07.13	12:02	TX TRIPPED ON RET 670(GEN TRIP,E/F),REC(670,CB TROUBLE ALARM,86A&B),86A&B 66KV I/C-1 TRIPPED ON 86A&B
14	03.07.13	22:03	220 KV TRAUMA CENTER-RIDGE VALLEY CKT-2	03.07.13	22:13	CKT TRIPPED ON GENERAL TRIP,86A&B AT RIDGE VALLEY. NO TRIPPING AT TRAUMA CENTER.
15	04.07.13	14:45	INDRAPRASTHA POWER 33KV DELHI GATE CKT (BAY-17)	04.07.13	15:06	33KV TIE CB NO-12 OF 33KV WEST BUS TRIPPED ON O/C,B-PH,E/F AND 33KV TIE CB NO-36 OF 33KV WEST BUS TRIPPED ON R&B-PH,E/F.
16	04.07.13	14:45	INDRAPRASTHA POWER 33KV IG STADIUM CKT-II (BAY-33)	04.07.13	15:06	33KV TIE CB NO-12 OF 33KV WEST BUS TRIPPED ON O/C,B-PH,E/F AND 33KV TIE CB NO-36 OF 33KV WEST BUS TRIPPED ON R&B-PH,E/F.
17	04.07.13	14:45	INDRAPRASTHA POWER 33KV IG STADIUM CKT-I (BAY-29)	04.07.13	15:06	33KV TIE CB NO-12 OF 33KV WEST BUS TRIPPED ON O/C,B-PH,E/F AND 33KV TIE CB NO-36 OF 33KV WEST BUS TRIPPED ON R&B-PH,E/F.
18	04.07.13	14:45	INDRAPRASTHA POWER 33KV KILOKRI CKT (BAY-25)	04.07.13	15:06	33KV TIE CB NO-12 OF 33KV WEST BUS TRIPPED ON O/C,B-PH,E/F AND 33KV TIE CB NO-36 OF 33KV WEST BUS TRIPPED ON R&B-PH,E/F.
19	04.07.13	14:45	INDRAPRASTHA POWER 33KV GB PANT CKT (BAY-19)	04.07.13	15:06	33KV TIE CB NO-12 OF 33KV WEST BUS TRIPPED ON O/C,B-PH,E/F AND 33KV TIE CB NO-36 OF 33KV WEST BUS TRIPPED ON R&B-PH,E/F.
20	04.07.13	14:45	INDRAPRASTHA POWER 33KV NIZAMUDDIN CKT (BAY-13)	04.07.13	15:06	33KV TIE CB NO-12 OF 33KV WEST BUS TRIPPED ON O/C,B-PH,E/F AND 33KV TIE CB NO-36 OF 33KV WEST BUS TRIPPED ON R&B-PH,E/F.
21	04.07.13	14:45	INDRAPRASTHA POWER 33KV EXHIBITION GR-2 CKT (BAY-9)	04.07.13	15:06	33KV TIE CB NO-12 OF 33KV WEST BUS TRIPPED ON O/C,B-PH,E/F AND 33KV TIE CB NO-36 OF 33KV WEST BUS TRIPPED ON R&B-PH,E/F.
22	04.07.13	14:45	INDRAPRASTHA POWER 33KV EXHIBITION GR-I CKT (BAY-7)	04.07.13	15:06	33KV TIE CB NO-12 OF 33KV WEST BUS TRIPPED ON O/C,B-PH,E/F AND 33KV TIE CB NO-36 OF 33KV WEST BUS TRIPPED ON R&B-PH,E/F.
23	04.07.13	14:45	INDRAPRASTHA POWER 33KV LAJPATNAGAR CKT (BAY-5)	04.07.13	15:06	33KV TIE CB NO-12 OF 33KV WEST BUS TRIPPED ON O/C,B-PH,E/F AND 33KV TIE CB NO-36 OF 33KV WEST BUS TRIPPED ON R&B-PH,E/F.
24	04.07.13	14:45	INDRAPRASTHA POWER 33KV KILOKRI CKT (BAY-1)	04.07.13	15:06	33KV TIE CB NO-12 OF 33KV WEST BUS TRIPPED ON O/C,B-PH,E/F AND 33KV TIE CB NO-36 OF 33KV WEST BUS TRIPPED ON R&B-PH,E/F.
25	05.07.13	12:48	WAZIRABAD 66/11kV, 20MVA Tx-IV	05.07.13	15:15	TX. TRIPPED ON DIFFERENTIAL PROTECTION. BIRDAGE REPORTED IN YARD.
26	05.07.13	18:42	PAPPANKALAN-I 220/66kV 100MVA Tx-IV	05.07.13	18:58	66KV I/C-4 TRIPPED ON O/C,E/F,86
27	05.07.13	23:25	PAPPANKALAN-I 66/11kV, 20MVA Tx-III	05.07.13	23:31	TX TRIPPED ON O/C,R-PH,30ABC
28	07.07.13	13:02	NARAINA 33kV KHEBER LINE CKT-II	07.07.13	13:20	ALL PHASE PT OF 33KV BUS-2 DAMAGED. CKT CHARGED THROUGH 33KV BUS-1.
29	07.07.13	13:02	NARAINA 33kV KHEBER LINE CKT-I	07.07.13	13:20	ALL PHASE PT OF 33KV BUS-2 DAMAGED. CKT CHARGED THROUGH 33KV BUS-1.
30	07.07.13	13:02	NARAINA 33kV KIRBI PLACE CKT-II	07.07.13	13:20	ALL PHASE PT OF 33KV BUS-2 DAMAGED. CKT CHARGED THROUGH 33KV BUS-1.
31	07.07.13	13:02	NARAINA 33kV KIRBI PLACE CKT-I	07.07.13	13:20	ALL PHASE PT OF 33KV BUS-2 DAMAGED. CKT CHARGED THROUGH 33KV BUS-1.
32	07.07.13	13:02	NARAINA 220/33kV 100MVA Tx-II	08.07.13	19:10	ALL PHASE PT OF 33KV BUS-2 DAMAGED.

SL NO	OCCURRENCE OF BREAK-DOWN		DETAILS OF THE BREAKDOWN	TIME OF RESTORATION		REMARKS
	DATE	TIME		DATE	TIME	
33	07.07.13	13:02	NARAINA 33kV SHEKHAWATI CKT	07.07.13	13:20	ALL PHASE PT OF 33KV BUS-2 DAMAGED. CKT CHARGED THROUGH 33KV BUS-1.
34	07.07.13	16:12	220kV GEETA COLONY-PATPARGANJ CKT-I	07.07.13	16:21	AT PPG CKT TRIPPED ON D/P,Z-1,DIST-2.989 KM AT GEETA COLONY CKT TRIPPED ON D/P,ABC-PH,Z-1,DIST-1.568 KM.
35	09.07.13	8:12	220kV WAZIRABAD - KASHMIRGATE CKT-II	09.07.13	8:29	AT WZB CKT TRIPPED ON D/P,Y-PH,DIST-0.7 KM NO TRIPPING AT KASHMIRGATE.
36	09.07.13	17:43	220KV WAZIRABAD - MANDOLA CKT-III	09.07.13	18:05	AT WZB CKT TRIPPED ON D/P,RY&B-PH,Z-1 NO TRIPPING AT MANDOLA.
37	09.07.13	17:43	220KV WAZIRABAD - MANDOLA CKT-II	09.07.13	20:38	AT WZB CKT TRIPPED ON D/P,RY&B-PH,Z-1 NO TRIPPING AT MANDOLA.
38	09.07.13	17:43	WAZIRABAD 220/66kV 100MVA Tx-III	09.07.13	18:20	66KV I/C-3 TRIPPED ON E/F,O/C.
39	09.07.13	17:43	WAZIRABAD 220/66kV 100MVA Tx-I	09.07.13	18:19	66KV I/C-1 TRIPPED ON E/F,O/C.
40	09.07.13	17:43	WAZIRABAD 220/66kV 100MVA Tx-II	09.07.13	22:05	TX TRIPPED ON PRV, BUCHHOLZ INDICATION.
41	09.07.13	19:05	PARKSTREET 220/33kV 100MVA Tx-II	09.07.13	21:26	TX TRIPPED ON 51A(O/C) AND 33KV I/C-2 TRIPPED ON 51A(O/C)
42	09.07.13	19:05	PARKSTREET 220/33kV 100MVA Tx-I	09.07.13	20:05	TX TRIPPED ON 86 AND 33KV I/C-1 TRIPPED ON 51A(O/C).
43	09.07.13	20:15	MUNDKA 220/66kV 160MVA Tx-II	10.07.13	6:50	TX TRIPPED ON 186,PRV RELAY.
44	10.07.13	4:45	SARITA VIHAR 66kV 20MVAR CAP. BANK	11.07.13	11:48	CAP. BANK TRIPPED ON E/F.
45	10.07.13	7:38	DSIIDC Bawana 220/66kV 100MVA Tx-III	10.07.13	8:23	TX TRIPPED ON DIFFERENTIAL PROTECTION. BIRDAGE REPORTED IN YARD.
46	10.07.13	9:28	MEHRAULI 66/11kV, 20MVA Tx-I	10.07.13	11:40	TX TRIPPED ON 30D (OIL TEMP. TRIP)
47	10.07.13	11:26	220KV WAZIRABAD - MANDOLA CKT-III	10.07.13	11:43	AT WZB CKT TRIPPED ON 86. NO TRIPPING AT 400KV MANDOLA.
48	11.07.13	0:00	220kV DSIIDC BAWANA-NARELA CKT-I	11.07.13	0:00	AT DSIDC BWN CKT TRIPPED ON D/P,A,B&C-PH,Z-2. NO TRIPPING AT 220KV NRL.
49	11.07.13	9:25	220KV WAZIRABAD - MANDOLA CKT-IV	11.07.13	22:30	AT WZB CKT TRIPPED ON D/P,Z-1,R-PH AT MDL CKT TRIPPED ON D/P,R&B-N PHASE,DIST.-11.44KM JUMPER SNAPPED NEAR CRPF CAMP.
50	11.07.13	10:01	GOPALPUR 220/66kV 100MVA Tx-I	11.07.13	10:14	66KV I/C-1 TRIPPED ON E/F,86.
51	11.07.13	13:42	220kV DSIIDC BAWANA-NARELA CKT-II	11.07.13	14:17	AT DSIDC BWN CKT TRIPPED ON D/P,A,B&C-PH,Z-2. NO TRIPPING AT 220KV NRL.
52	11.07.13	13:42	220kV BAWANA-DSIIDC BAWANA CKT-II	11.07.13	14:17	AT DSIDC BWN CKT TRIPPED ON 86. NO TRIPPING AT 400KV BWN.
53	11.07.13	13:42	220kV BAWANA-DSIIDC BAWANA CKT-I	11.07.13	19:55	AT BWN CKT TRIPPED ON D/P,Z-2,86,A/R,DIST-2.9KM AT DSIDC BWN CKT TRIPPED WITHOUT INDICATION. JUMPER OF B-PH LINE ISOLATOR SNAPPED AT DSIDC BWN.
54	11.07.13	23:01	220kV BAMNAULI-PAPPANKALAN-I CKT-II	12.07.13	9:57	AT BAMNAULI CKT TRIPPED ON 67N(E/F),186 A&B. NO TRIPPING AT PPK-1. R-PH JUMPER SNAPPED AT TOWER NO-21.
55	11.07.13	23:01	220kV BAMNAULI-PAPPANKALAN-I CKT-I	11.07.13	1:18	AT PPK-1 CKT TRIPPED ON O/C. NO TRIPPING AT 400KV BAMNAULI.
56	13.07.13	3:30	GEETA COLONY 220/33kV 100MVA Tx-I	13.07.13	3:43	33KV I/C-1 TRIPPED ON CB AUTO TRIP.
57	13.07.13	10:45	GEETA COLONY 220/33kV 100MVA Tx-I	13.07.13	10:47	33KV I/C-1 TRIPPED ON CB AUTO TRIP.
58	13.07.13	10:50	220kV MEHRAULI - VASANT KUNJ CKT.- II	13.07.13	11:14	AT MEHRAULI CKT TRIPPED ON 186 A&B AND 96. NO TRIPPING AT VASANTKUNJ.
59	13.07.13	10:50	220kV MEHRAULI - VASANT KUNJ CKT.-I	13.07.13	11:14	AT MEHRAULI CKT TRIPPED ON 186 A&B AND 96. NO TRIPPING AT VASANTKUNJ.
60	15.07.13	8:15	GEETA COLONY 220/33kV 100MVA Tx-II	15.07.13	9:35	33KV I/C-2 TRIPPED ON AUTO TRIP.
61	15.07.13	15:00	GEETA COLONY 220/33kV 100MVA Tx-I	15.07.13	19:16	33KV I/C-1 TRIPPED ON 30, AUTO TRIP.
62	15.07.13	22:28	PATPARGANJ 220/66kV 100MVA Tx-I	15.07.13	22:30	66KV I/C-1 TRIPPED ON OVER CURRENT.
63	16.07.13	11:44	NAJAFGARH 220/66kV 100MVA Tx-II	16.07.13	18:50	TX TRIPPED ON 86,30E(SPR).
64	17.07.13	2:20	OKHLA 220/33kV 100MVA Tx-IV	17.07.13	2:38	33KV I/C-4 TRIPPED ON E/F,86.
65	17.07.13	2:20	OKHLA 220/33kV 100MVA Tx-III	17.07.13	2:38	33KV I/C-3 TRIPPED ON E/F,86
66	17.07.13	2:20	OKHLA 33kV ALAKNANDA CKT-I	17.07.13	9:36	CKT TRIPPED ON O/C,B-PH,186,D/P,Z-2. CKT Y-PH BUS ISOLATOR JUMPER SNAPPED.
67	17.07.13	2:20	OKHLA 220/33kV 50MVA Tx-I	17.07.13	7:15	33KV TRIPPED ON E/F,86.

SL NO	OCCURRENCE OF BREAK-DOWN		DETAILS OF THE BREAKDOWN	TIME OF RESTORATION		REMARKS
	DATE	TIME		DATE	TIME	
68	17.07.13	2:25	MASJID MOTH 33kV ALAKANANDA	17.07.13	18:50	CKT TRIPPED ON O/C,E/F AND D/P. BUS ISOLATOR DROPPER OF ALL PHASE SNAPPED.
69	17.07.13	2:25	MASJID MOTH 220/33kV 100MVA Tx-I	17.07.13	2:40	33KV I/C-1 TRIPPED ON O/C,E/F.
70	17.07.13	2:25	MASJID MOTH 220/33kV 100MVA Tx-II	17.07.13	2:40	33KV I/C-2 TRIPPED ON O/C,E/F.
71	17.07.13	20:52	220KVBAWANA- ROHINI CKT-I	17.07.13	20:57	AT BAWANA CKT TRIPPED ON 186 A&B-PH. NO TRIPPING AT ROHONI S/STN.
72	18.07.13	9:14	220KVBAWANA- ROHINI CKT-I	18.07.13	18:59	AT BAWANA CKT TRIPPED ON 186 A&B. NO TRIPPING AT ROHINI.
73	18.07.13	19:24	220KVBAWANA- ROHINI CKT-I	18.07.13	19:30	AT BAWANA CKT TRIPPED ON 186 A&B,A/R. NO TRIPPING AT ROHINI.
74	18.07.13	20:36	220 KV TRAUMA CENTER-RIDGE VALLEY CKT-2	18.07.13	21:17	AT RIDGE VALLEY CKT TRIPPED ON DIFFERENTIAL,86 A&B. NO TRIPPING AT TRAUMA CENTRE.
75	18.07.13	20:35	LODHI RD 33/11kV, 16MVA Tx-IV	18.07.13	21:50	TX TRIPPED ON OLTC BUCHHOLZ,86.
76	18.07.13	22:42	PATPARGANJ 220/66kV 100MVA Tx-I	18.07.13	22:51	66KV I/C-1 TRIPPED ON O/C ALONG WITH 66KV BUS COUPLER WHICH ALSO TRIPPED ON O/C.
77	18.07.13	22:59	PATPARGANJ 220/66kV 100MVA Tx-I	18.07.13	23:10	66KV I/C-1 TRIPPED ON O/C ALONG WITH 66KV BUS COUPLER WHICH ALSO TRIPPED ON O/C.
78	18.07.13	23:25	PATPARGANJ 220/66kV 100MVA Tx-I	18.07.13	23:32	66KV I/C-1 TRIPPED ON O/C ALONG WITH 66KV BUS COUPLER WHICH ALSO TRIPPED ON O/C.
79	19.07.13	11:40	220kV MAHARANI BAGH - SARITA VIHAR CKT	19.07.13	14:34	AT MAHARANIBAGH CKT TRIPPED ON DIST. PROTECTION, DIST-11 KM. NO TRIPPING AT SARITA VIHAR.
80	19.07.13	11:40	220kV PRAGATI - SARITA VIHAR CKT	19.07.13	14:58	AT SARITA VIHAR CKT TRIPPED ON D/P,AB&C-PH,DIST-3.064 KM,SOTF. CKT WAS IN OFF POSITION AT PRAGATI.
81	19.07.13	14:08	220kV SARITA VIHAR - BTPS CKT.-I	19.07.13	17:44	AT SARITA VIHAR CKT TRIPPED ON D/P,B-PH,186 A&B. AT BTPS CKT TRIPPED ON D/P,Z-1,B-PH,DIST-0.5 KM & E/F. LATER IT WAS INFORMED BY BTPS THAT TREE IS TOUCHING THE CKT NEAR BTPS.
82	20.07.13	9:02	NAJAFGARH 220/66kV 100MVA Tx-IV	20.07.13	19:13	TX TRIPPED ON SPR & 86. WATER FOUND IN SPR RELAY.
83	20.07.13	14:05	SHALIMAR BAGH 220/33kV 100MVA Tx-II	20.07.13	15:42	TX TRIPPED ON 30D,OLTC BUCHHOLZ RELAY.
84	20.07.13	14:40	PATPARGANJ 33/11kV, 16MVA Tx	20.07.13	16:30	TX TRIPPED ON PRV.
85	20.07.13	14:47	LODHI RD 220/33kV 100MVA Tx-I	20.07.13	16:48	TX TRIPPED ON 30D,OLTC BUCHHOLZ RELAY,86 B&C,A/R,186.
86	20.07.13	17:30	PATPARGANJ 220/33kV 100MVA Tx-I	29.07.13	17:30	TX TRIPPED ON BUCHHOLZ,87 AND 86. 33KV I/C-1 TRIPPED WITHOUT INDICATION. 33KV I/C BUSHING DAMAGED.
87	20.07.13	22:06	GEETA COLONY 220/33kV 100MVA Tx-I	20.07.13	9:15	33KV I/C-1 TRIPPED ON 30E(AUTO TRIP).
88	21.07.13	6:42	220kV PRAGATI - SARITA VIHAR CKT	21.07.13	11:53	AT SARITA VIHAR CKT TRIPPED ON D/P,DIST-9.7 KM,E/F. CKT WAS OFF AT PRAGATI END.
89	21.07.13	6:42	220kV MAHARANI BAGH - SARITA VIHAR CKT	21.07.13	11:52	AT MAHARANI BAGH CKT TRIPPED A/R,86A&B,SOTF. NO TRIPPING AT SARITA VIHAR.
90	21.07.13	22:15	220KVBAWANA- ROHINI CKT-I	21.07.13	22:22	AT BAWANA CKT TRIPPED ON 186 A&B. NO TRIPPING AT ROHINI.
91	22.07.13	8:10	SHALIMAR BAGH 33/11kV, 16MVA Tx-I	22.07.13	12:12	TX TRIPPED ON 30E,86
92	22.07.13	9:45	INDRAPRASTHA POWER 220/33kV 100MVA Tx-I	22.07.13	12:38	TX TRIPPED ON E/F.
93	22.07.13	9:45	220kV PRAGATI - I.P.CKT - I	22.07.13	13:02	AT PRAGATI CKT TRIPPED ON D/P,Z-2,AB&C-PH,DIST-1.668 KM. NO TRIPPING AT IP.
94	22.07.13	9:45	220kV PRAGATI - SARITA VIHAR CKT	22.07.13	11:24	AT SARITA VIHAR CKT TRIPPED ON E/F,BACK UP PROTECTION, AUTO RECLOSE. NO TRIPPING AT PRAGATI.
95	22.07.13	9:45	220 KV PATPARGANJ - I.P. CKT-I	22.07.13	12:35	AT PPG CKT TRIPPED ON E/F,186. AT IP CKT TRIPPED ON DIRECTIONAL E/F.
96	22.07.13	10:05	220 KV I.P.- RPH CKT-I	22.07.13	23:05	AT IP CONDUCTOR OF B-PH WAVE TRAP BROKEN.
97	22.07.13	10:39	PRAGATI 220/66kV 160MVA Tx-II	22.07.13	11:42	TX TRIPPED ON DIFFERENTIAL,86.
98	22.07.13	10:42	220 KV PATPARGANJ - I.P. CKT-II	22.07.13	10:45	AT PPG CKT TRIPPED ON D/P,Z-2,DIST-4.604 KM. NO TRIPPING AT IP
99	22.07.13	10:42	220kV PRAGATI - I.P.CKT - II	22.07.13	15:12	AT PRAGATI CKT TRIPPED ON D/P,Z-2,DIST-311M. NO TRIPPING AT IP
100	23.07.13	15:02	220kV MEHRAULI - BTPS CKT. - I	23.07.13	20:10	AT MEHRAULI CKT TRIPPED ON D/P,Z-1,C-PH,DIST-14.8 KM AT BTPS CKT TRIPPED ON B-PH,E/F,D/P,Z-1
101	24.07.13	9:56	DSIIDC Bawana 220/66kV 100MVA Tx-III	24.07.13	11:02	TX TRIPPED ON E/F,86.
102	24.07.13	9:56	220kV BAWANA-DSIIDC BAWANA CKT-I	24.07.13	10:32	AT DSIDC CKT TRIPPED ON 21,MAIN-1,MAIN-2,D/P,A-PH,86. AT BAWANA CKT TRIPPED ON D/P,DIST-1.3 KM,21X,
103	26.07.13	7:40	INDRAPRASTHA POWER 220/33kV 100MVA Tx-II	26.07.13	8:15	33KV I/C-2 TRIPPED ON O/C,Y-PH.
104	26.07.13	7:40	INDRAPRASTHA POWER 220/33kV 100MVA Tx-I	26.07.13	8:15	33KV I/C-1 TRIPPED ON 86.
105	27.07.13	15:15	OKHLA 220/33kV 100MVA Tx-III	27.07.13	15:40	33KV I/C-3 TRIPPED ON O/C.
106	27.07.13	15:15	OKHLA 220/33kV 100MVA Tx-IV	27.07.13	19:30	33KV I/C-4 TRIPPED ON O/C.

SL NO	OCCURRENCE OF BREAK-DOWN		DETAILS OF THE BREAKDOWN	TIME OF RESTORATION		REMARKS
	DATE	TIME		DATE	TIME	
107	27.07.13	15:15	220kV OKHLA - BTPS CKT. - II	27.07.13	16:38	AT BTPS CKT TRIPPED ON D/P,Y&B-PH,Z-1,DIST-5.3 KM. NO TRIPPING AT OKHLA.
108	28.07.13	11:19	DSIIDC Bawana 220/66kV 100MVA Tx-III	28.07.13	12:40	TX TRIPPED ON O/C,E/F,86.
109	28.07.13	11:19	220kV BAWANA-DSIIDC BAWANA CKT-I	28.07.13	11:58	AT DSIDC GRID CKT TRIPPED ON D/P,A-PH,86. AT BAWANA CKT TRIPPED ON D/P,Z-1,DIST-1.24KM
110	28.07.13	12:51	220kV DSIIDC BAWANA-NARELA CKT-I	28.07.13	20:40	B-PH BUS-1 ISOLATOR JUMPER AND CLAMP SNAPPED AT NARELA YARD.
111	28.07.13	23:02	PATPARGANJ 220/66kV 100MVA Tx-I	28.07.13	23:10	66KV I/C-1 TRIPPED ON O/C,86.
112	28.07.13	23:22	PATPARGANJ 220/66kV 100MVA Tx-I	28.07.13	23:30	66KV I/C-1 TRIPPED ON O/C,86 AND 66KV BUS COUPLER ALSO TRIPPED ON O/C,86.
113	28.07.13	23:35	PATPARGANJ 220/66kV 100MVA Tx-I	28.07.13	23:40	66KV I/C-1 TRIPPED ON O/C,86 AND 66KV BUS COUPLER ALSO TRIPPED ON O/C,86.
114	29.07.13	0:56	220 KV TRAUMA CENTER-RIDGE VALLEY CKT-2	29.07.13	1:12	AT RIDGE VALLEY CKT TRIPPED ON DIFFERENTIAL,GENERAL TRIP,86 A&B. NO TRIPPING AT TRAUMA CENTER.
115	29.07.13	0:56	220kV BAMNAULI-PAPPANKALAN-I CKT-II	29.07.13	13:51	AT BAMNAULI CKT TRIPPED ON D/P,A-PH,Z-2,186 A&B. AT PPK-1 CKT TRIPPED ON D/P,A-PH,186. R-PH CVT OF CKT DAMAGED.
116	29.07.13	0:56	220kV BAMNAULI-PAPPANKALAN-I CKT-I	29.07.13	0:18	AT PPK-1 CKT TRIPPED ON 186. NO TRIPPING AT BAMNAULI.
117	31.07.13	9:55	PRAGATI 220/66kV 160MVA Tx-II	31.07.13	10:31	AT TX TRIPPED ON OIL TEMP. HIGH,86. 66KV I/C-2 TRIPPED WITHOUT INDICATION.
118	31.07.13	10:47	PRAGATI 220/66kV 160MVA Tx-II	31.07.13	11:15	TX TRIPPED ON OLTC BUCHHOLZ, OIL TEMP. HIGH AND WINDING TEMP. HIGH, 86.
119	31.07.13	10:47	PRAGATI 220/66kV 160MVA Tx-I	31.07.13	19:07	TX TRIPPED ON OLTC BUCHHOLZ,86. FLASH REPORTED AT 66KV I/C-1 ISOLATOR AT GT END.

20 DETAILS OF UNDER FREQUENCY RELAY OPERATIONS IN DELHI POWER SYSTEM DURING THE MONTH OF JULY 2013

DATE	S. N.	TIME		Name of Grid	NAME OF AFFECTED FEEDERS	MODE	LOAD RELIEF IN MW
		OUT	IN				
01.07.13	1	19:57	20:03	220KV GEETA COLONY	33KV KAILASH NAGAR CKT.	DF/DT MODE	35
02.07.13	2	22:19	22:44	220KV KHANJAWALA	11KV LOAD	MAL FUNCTIONING	2
05.07.13	3	15:46	16:07	220KV SHALIMARBAGH	33KV SMB KHOSLA CKT.	DF/DT MODE	42
05.07.13	4	15:46	15:51	220KV KHANJAWALA	11KV LOAD	DF/DT MODE	4
05.07.13	5	15:46	15:49	220KV SUBZI MANDI	11KV LOAD	DF/DT MODE	1
05.07.13	6	18:13	18:22	220KV KHANJAWALA	11KV LOAD	DF/DT MODE	2
05.07.13	7	19:47	19:53	220KV KHANJAWALA	11KV LOAD	DF/DT MODE	14
05.07.13	8	13:38	13:40	220KV LODHI ROD	33KV INDIAN HABITAT CENTER CKT.	DF/DT MODE	4
05.07.13	9	15:46	15:51	220KV NAJAFGARH	33KV SMB KHOSLA CKT.	DF/DT MODE	3
05.07.13	10	15:46	15:49	220KV GEETA COLONY	KAILASH NAGAR CKT.	DF/DT MODE	35
16.07.13	11	19:30	19:50	220KV PATPARGANJ	33KV PREET VIHAR CKT. 11KV LOAD	DF/DT MODE	11
19.07.13	12	14:35	15:06	220KV NARAINA	11KV LOAD	DF/DT MODE	2